

Product datasheet for **CF811373**

TAF1 48 (TAF1A) Mouse Monoclonal Antibody [Clone ID: OTI8C10]

Product data:

Product Type:	Primary Antibodies
Clone Name:	OTI8C10
Applications:	WB
Recommended Dilution:	WB 1:500
Reactivity:	Human
Host:	Mouse
Isotype:	IgG1
Clonality:	Monoclonal
Immunogen:	Full length human recombinant protein of human TAF1A (NP_647603) produced in E.coli.
Formulation:	Lyophilized powder (original buffer 1X PBS, pH 7.3, 8% trehalose)
Reconstitution Method:	For reconstitution, we recommend adding 100uL distilled water to a final antibody concentration of about 1 mg/mL. To use this carrier-free antibody for conjugation experiment, we strongly recommend performing another round of desalting process. (OriGene recommends Zeba Spin Desalting Columns, 7KMWCO from Thermo Scientific)
Purification:	Purified from mouse ascites fluids or tissue culture supernatant by affinity chromatography (protein A/G)
Conjugation:	Unconjugated
Storage:	Store at -20°C as received.
Stability:	Stable for 12 months from date of receipt.
Predicted Protein Size:	39.4 kDa
Gene Name:	TATA-box binding protein associated factor, RNA polymerase I subunit A
Database Link:	NP_647603 Entrez Gene 9015 Human Q15573
Background:	This gene encodes a subunit of the RNA polymerase I complex, Selectivity Factor I (SLI). The encoded protein is a TATA box-binding protein-associated factor that plays a role in the assembly of the RNA polymerase I preinitiation complex. Alternate splicing results in multiple transcript variants encoding multiple isoforms. [provided by RefSeq, Jan 2011]

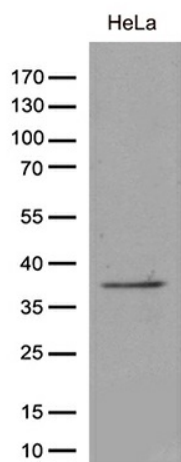


[View online »](#)

Synonyms: MGC:17061; RAFI48; SL1; TAFI48

Protein Families: Transcription Factors

Product images:



Western blot analysis of extracts (35ug) from cell lines and/or tissue lysates by using anti-TAF1A monoclonal antibody (1:500).