

## Product datasheet for **CF811358**

### Miz1 (ZBTB17) Mouse Monoclonal Antibody [Clone ID: OTI7G8]

#### Product data:

Product Type:	Primary Antibodies
Clone Name:	OTI7G8
Applications:	WB
Recommended Dilution:	WB 1:2000
Reactivity:	Human, Mouse, Rat
Host:	Mouse
Isotype:	IgG1
Clonality:	Monoclonal
Immunogen:	Human recombinant protein fragment corresponding to amino acids 112-457 of human ZBTB17 (NP_003434) produced in E.coli.
Formulation:	Lyophilized powder (original buffer 1X PBS, pH 7.3, 8% trehalose)
Reconstitution Method:	For reconstitution, we recommend adding 100uL distilled water to a final antibody concentration of about 1 mg/mL. To use this carrier-free antibody for conjugation experiment, we strongly recommend performing another round of desalting process. (OriGene recommends Zeba Spin Desalting Columns, 7KMWCO from Thermo Scientific)
Purification:	Purified from mouse ascites fluids or tissue culture supernatant by affinity chromatography (protein A/G)
Conjugation:	Unconjugated
Storage:	Store at -20°C as received.
Stability:	Stable for 12 months from date of receipt.
Gene Name:	zinc finger and BTB domain containing 17
Database Link:	<a href="#">NP_003434</a> <a href="#">Entrez Gene 7709 Human Q13105</a>
Background:	This gene encodes a zinc finger protein involved in the regulation of c-myc. The symbol MIZ1 has also been associated with PIAS2 which is a different gene located on chromosome 18. [provided by RefSeq, Jul 2008]
Synonyms:	MIZ-1; pHZ-67; ZNF60; ZNF151

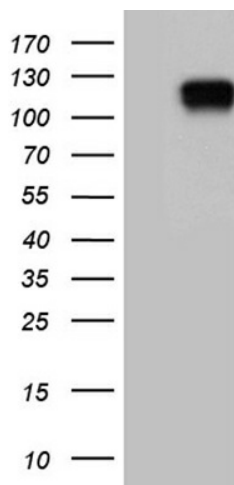


[View online »](#)

Protein Families: Transcription Factors

Protein Pathways: Cell cycle

### Product images:



HEK293T cells were transfected with the pCMV6-ENTRY control (Left lane) or pCMV6-ENTRY ZBTB17 ([RC216143], Right lane) cDNA for 48 hrs and lysed. Equivalent amounts of cell lysates (5 ug per lane) were separated by SDS-PAGE and immunoblotted with anti-ZBTB17 (1:2000). Positive lysates [LY401167] (100ug) and [LC401167] (20ug) can be purchased separately from OriGene.