

## Product datasheet for **CF811342**

### SEC11A Mouse Monoclonal Antibody [Clone ID: OTI1A11]

#### Product data:

Product Type:	Primary Antibodies
Clone Name:	OTI1A11
Applications:	WB
Recommended Dilution:	WB 1:500
Reactivity:	Human, Mouse, Rat
Host:	Mouse
Isotype:	IgG2b
Clonality:	Monoclonal
Immunogen:	Full length human recombinant protein of human SEC11A (NP_055115) produced in E.coli.
Formulation:	Lyophilized powder (original buffer 1X PBS, pH 7.3, 8% trehalose)
Reconstitution Method:	For reconstitution, we recommend adding 100uL distilled water to a final antibody concentration of about 1 mg/mL. To use this carrier-free antibody for conjugation experiment, we strongly recommend performing another round of desalting process. (OriGene recommends Zeba Spin Desalting Columns, 7KMWCO from Thermo Scientific)
Purification:	Purified from mouse ascites fluids or tissue culture supernatant by affinity chromatography (protein A/G)
Conjugation:	Unconjugated
Storage:	Store at -20°C as received.
Stability:	Stable for 12 months from date of receipt.
Gene Name:	SEC11 homolog A, signal peptidase complex subunit
Database Link:	<a href="#">NP_055115</a> <a href="#">Entrez Gene 23478 Human P67812</a>
Background:	This gene encodes a member of the peptidase S26B family. The encoded protein is an 18kDa subunit of the signal peptidase complex and has been linked to cell migration and invasion, gastric cancer and lymph node metastasis. Alternative splicing results in multiple transcript variants. A related pseudogene has been identified on chromosome 8. [provided by RefSeq, Dec 2012]



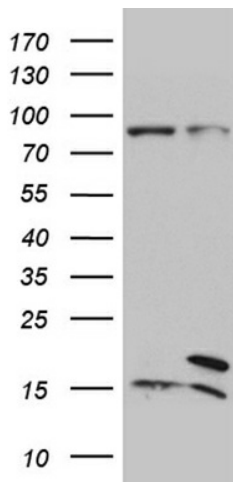
[View online »](#)

**Synonyms:** 1810012E07Rik; SEC11L1; sid2895; SPC18; SPCS4A

**Protein Families:** Druggable Genome, Protease, Transmembrane

**Protein Pathways:** Protein export

**Product images:**



HEK293T cells were transfected with the pCMV6-ENTRY control (Left lane) or pCMV6-ENTRY SEC11A ([RC204971], Right lane) cDNA for 48 hrs and lysed. Equivalent amounts of cell lysates (5 ug per lane) were separated by SDS-PAGE and immunoblotted with anti-SEC11A (1:500). Positive lysates [LY402308] (100ug) and [LC402308] (20ug) can be purchased separately from OriGene.