

Product datasheet for **CF811284**

N WASP (WASL) Mouse Monoclonal Antibody [Clone ID: OTI9F2]

Product data:

Product Type:	Primary Antibodies
Clone Name:	OTI9F2
Applications:	WB
Recommended Dilution:	WB 1:500~2000
Reactivity:	Human, Mouse
Host:	Mouse
Isotype:	IgG2b
Clonality:	Monoclonal
Immunogen:	Full length human recombinant protein of human WASL (NP_003932) produced in HEK293T cell.
Formulation:	Lyophilized powder (original buffer 1X PBS, pH 7.3, 8% trehalose)
Reconstitution Method:	For reconstitution, we recommend adding 100uL distilled water to a final antibody concentration of about 1 mg/mL. To use this carrier-free antibody for conjugation experiment, we strongly recommend performing another round of desalting process. (OriGene recommends Zeba Spin Desalting Columns, 7KMWCO from Thermo Scientific)
Purification:	Purified from mouse ascites fluids or tissue culture supernatant by affinity chromatography (protein A/G)
Conjugation:	Unconjugated
Storage:	Store at -20°C as received.
Stability:	Stable for 12 months from date of receipt.
Predicted Protein Size:	54.6 kDa
Gene Name:	WASP like actin nucleation promoting factor
Database Link:	NP_003932 Entrez Gene 73178 Mouse Entrez Gene 8976 Human O00401
Synonyms:	N-WASP; NWASP; WASPB
Protein Families:	Druggable Genome

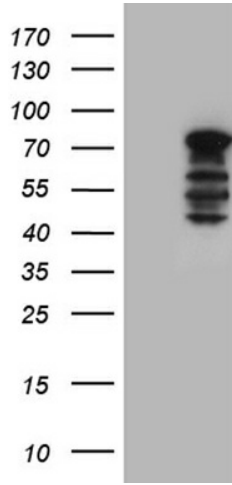


[View online »](#)

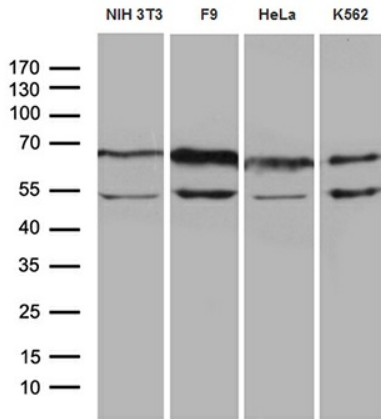
Protein Pathways:

Adherens junction, Chemokine signaling pathway, Fc gamma R-mediated phagocytosis, Pathogenic Escherichia coli infection, Regulation of actin cytoskeleton

Product images:



HEK293T cells were transfected with the pCMV6-ENTRY control (Left lane) or pCMV6-ENTRY WASL ([RC207967], Right lane) cDNA for 48 hrs and lysed. Equivalent amounts of cell lysates (5 ug per lane) were separated by SDS-PAGE and immunoblotted with anti-WASL (1:2000). Positive lysates [LY401293] (100ug) and [LC401293] (20ug) can be purchased separately from OriGene.



Western blot analysis of extracts (35ug) from 4 different cell lines by using anti-WASL monoclonal antibody (1:500).