

Product datasheet for **CF811276**

MLC1SA (MYL6B) Mouse Monoclonal Antibody [Clone ID: OTI5B11]

Product data:

Product Type:	Primary Antibodies
Clone Name:	OTI5B11
Applications:	WB
Recommended Dilution:	WB 1:2000
Reactivity:	Human, Mouse, Rat
Host:	Mouse
Isotype:	IgG2a
Clonality:	Monoclonal
Immunogen:	Full length human recombinant protein of human MYL6B (NP_002466) produced in E.coli.
Formulation:	Lyophilized powder (original buffer 1X PBS, pH 7.3, 8% trehalose)
Reconstitution Method:	For reconstitution, we recommend adding 100uL distilled water to a final antibody concentration of about 1 mg/mL. To use this carrier-free antibody for conjugation experiment, we strongly recommend performing another round of desalting process. (OriGene recommends Zeba Spin Desalting Columns, 7KMWCO from Thermo Scientific)
Purification:	Purified from mouse ascites fluids or tissue culture supernatant by affinity chromatography (protein A/G)
Conjugation:	Unconjugated
Storage:	Store at -20°C as received.
Stability:	Stable for 12 months from date of receipt.
Predicted Protein Size:	22.6 kDa
Gene Name:	myosin light chain 6B
Database Link:	NP_002466 Entrez Gene 216459 Mouse Entrez Gene 140465 Human P14649



[View online »](#)

Background:

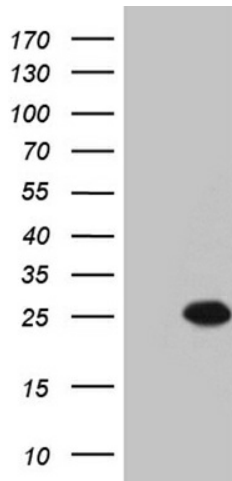
Myosin is a hexameric ATPase cellular motor protein. It is composed of two heavy chains, two nonphosphorylatable alkali light chains, and two phosphorylatable regulatory light chains. This gene encodes a myosin alkali light chain expressed in both slow-twitch skeletal muscle and in nonmuscle tissue. Alternative splicing results in multiple transcript variants. [provided by RefSeq, Dec 2010]

Synonyms:

MLC1SA

Protein Pathways:

Vascular smooth muscle contraction

Product images:


HEK293T cells were transfected with the pCMV6-ENTRY control (Left lane) or pCMV6-ENTRY MYL6B ([RC202076], Right lane) cDNA for 48 hrs and lysed. Equivalent amounts of cell lysates (5 ug per lane) were separated by SDS-PAGE and immunoblotted with anti-MYL6B. Positive lysates [LY419310] (100ug) and [LC419310] (20ug) can be purchased separately from OriGene.