

Product datasheet for **CF811264**

Paxillin (PXN) Mouse Monoclonal Antibody [Clone ID: OTI6B7]

Product data:

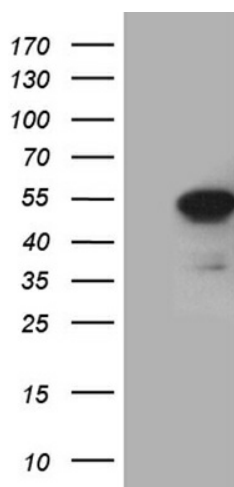
Product Type:	Primary Antibodies
Clone Name:	OTI6B7
Applications:	WB
Recommended Dilution:	WB 1:2000
Reactivity:	Human, Mouse, Rat
Host:	Mouse
Isotype:	IgG1
Clonality:	Monoclonal
Immunogen:	Full length human recombinant protein of human PXN (NP_079433) produced in E.coli.
Formulation:	Lyophilized powder (original buffer 1X PBS, pH 7.3, 8% trehalose)
Reconstitution Method:	For reconstitution, we recommend adding 100uL distilled water to a final antibody concentration of about 1 mg/mL. To use this carrier-free antibody for conjugation experiment, we strongly recommend performing another round of desalting process. (OriGene recommends Zeba Spin Desalting Columns, 7KMWCO from Thermo Scientific)
Purification:	Purified from mouse ascites fluids or tissue culture supernatant by affinity chromatography (protein A/G)
Conjugation:	Unconjugated
Storage:	Store at -20°C as received.
Stability:	Stable for 12 months from date of receipt.
Predicted Protein Size:	46.4 kDa
Gene Name:	paxillin
Database Link:	NP_079433 Entrez Gene 19303 MouseEntrez Gene 360820 RatEntrez Gene 5829 Human P49023
Synonyms:	FLJ16691
Protein Families:	Druggable Genome, Stem cell - Pluripotency



[View online »](#)

Protein Pathways: Chemokine signaling pathway, Focal adhesion, Leukocyte transendothelial migration, Regulation of actin cytoskeleton, VEGF signaling pathway

Product images:



HEK293T cells were transfected with the pCMV6-ENTRY control (Left lane) or pCMV6-ENTRY PXN ([RC225692], Right lane) cDNA for 48 hrs and lysed. Equivalent amounts of cell lysates (5 ug per lane) were separated by SDS-PAGE and immunoblotted with anti-PXN (1:2000). Positive lysates [LY429750] (100ug) and [LC429750] (20ug) can be purchased separately from OriGene.