

Product datasheet for **CF811247**

YBX2 Mouse Monoclonal Antibody [Clone ID: OTI3C12]

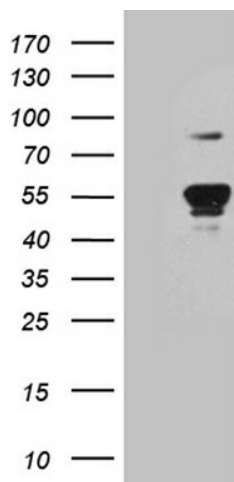
Product data:

| | |
|------------------------|--|
| Product Type: | Primary Antibodies |
| Clone Name: | OTI3C12 |
| Applications: | IHC, WB |
| Recommended Dilution: | WB 1:500~2000, IHC 1:500 |
| Reactivity: | Human, Mouse, Rat |
| Host: | Mouse |
| Isotype: | IgG1 |
| Clonality: | Monoclonal |
| Immunogen: | Full length human recombinant protein of human YBX2 (NP_057066) produced in E.coli. |
| Formulation: | Lyophilized powder (original buffer 1X PBS, pH 7.3, 8% trehalose) |
| Reconstitution Method: | For reconstitution, we recommend adding 100uL distilled water to a final antibody concentration of about 1 mg/mL. To use this carrier-free antibody for conjugation experiment, we strongly recommend performing another round of desalting process. (OriGene recommends Zeba Spin Desalting Columns, 7KMWCO from Thermo Scientific) |
| Purification: | Purified from mouse ascites fluids or tissue culture supernatant by affinity chromatography (protein A/G) |
| Conjugation: | Unconjugated |
| Storage: | Store at -20°C as received. |
| Stability: | Stable for 12 months from date of receipt. |
| Gene Name: | Y-box binding protein 2 |
| Database Link: | NP_057066 Entrez Gene 53422 Mouse Entrez Gene 303250 Rat Entrez Gene 51087 Human Q9Y2T7 |
| Background: | This gene encodes a nucleic acid binding protein which is highly expressed in germ cells. The encoded protein binds to a Y-box element in the promoters of certain genes but also binds to mRNA transcribed from these genes. Pseudogenes for this gene are located on chromosome 10 and 15. [provided by RefSeq, Feb 2012] |
| Synonyms: | CONTRIN; CSDA3; DBPC; MSY2 |

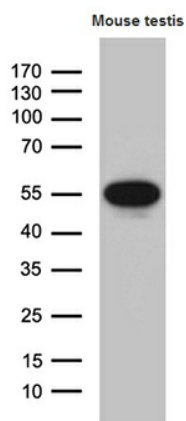


[View online »](#)

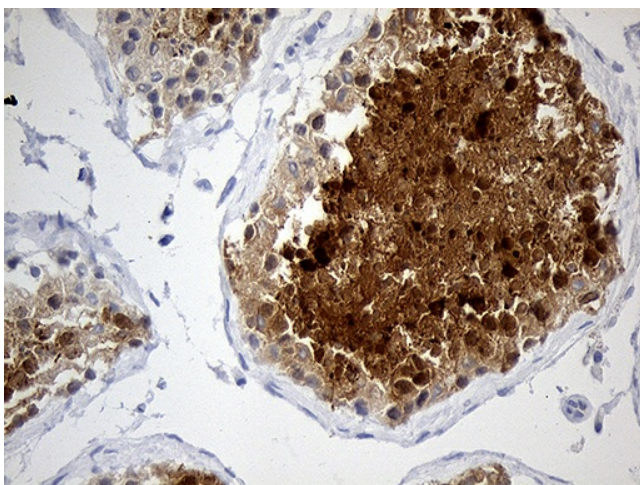
Product images:



HEK293T cells were transfected with the pCMV6-ENTRY control (Left lane) or pCMV6-ENTRY YBX2 ([RC208392], Right lane) cDNA for 48 hrs and lysed. Equivalent amounts of cell lysates (5 ug per lane) were separated by SDS-PAGE and immunoblotted with anti-YBX2 (1:2000). Positive lysates [LY414272] (100ug) and [LC414272] (20ug) can be purchased separately from OriGene.



Western blot analysis of extracts (35ug) from mouse testis tissue lysate by using anti-YBX2 monoclonal antibody (1:500).



Immunohistochemical staining of paraffin-embedded Human testicle tissue within the normal limits using anti-YBX2 mouse monoclonal antibody. Heat-induced epitope retrieval by EDTA solution buffer pH 8.0 at 120°C for 3 min.