

Product datasheet for **CF811235**

E74 like factor 1 (ELF1) Mouse Monoclonal Antibody [Clone ID: OTI3D3]

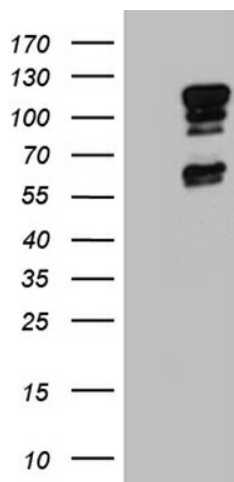
Product data:

| | |
|------------------------|--|
| Product Type: | Primary Antibodies |
| Clone Name: | OTI3D3 |
| Applications: | WB |
| Recommended Dilution: | WB 1:500~2000 |
| Reactivity: | Human, Mouse, Rat |
| Host: | Mouse |
| Isotype: | IgG1 |
| Clonality: | Monoclonal |
| Immunogen: | Full length human recombinant protein of human ELF1 (NP_758961) produced in E.coli. |
| Formulation: | Lyophilized powder (original buffer 1X PBS, pH 7.3, 8% trehalose) |
| Reconstitution Method: | For reconstitution, we recommend adding 100uL distilled water to a final antibody concentration of about 1 mg/mL. To use this carrier-free antibody for conjugation experiment, we strongly recommend performing another round of desalting process. (OriGene recommends Zeba Spin Desalting Columns, 7KMWCO from Thermo Scientific) |
| Purification: | Purified from mouse ascites fluids or tissue culture supernatant by affinity chromatography (protein A/G) |
| Conjugation: | Unconjugated |
| Storage: | Store at -20°C as received. |
| Stability: | Stable for 12 months from date of receipt. |
| Gene Name: | E74 like ETS transcription factor 1 |
| Database Link: | NP_758961 Entrez Gene 13709 Mouse Entrez Gene 85424 Rat Entrez Gene 1997 Human P32519 |
| Synonyms: | E74-like factor 1 (ets domain transcription factor); OTTHUMP00000018310 |
| Protein Families: | Transcription Factors |

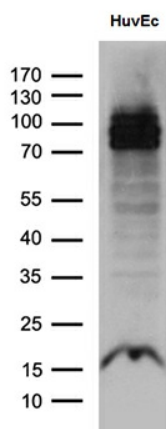


[View online »](#)

Product images:



HEK293T cells were transfected with the pCMV6-ENTRY control (Cat# [PS100001], Left lane) or pCMV6-ENTRY ELF1 (Cat# [RC207140], Right lane) cDNA for 48 hrs and lysed. Equivalent amounts of cell lysates (5 ug per lane) were separated by SDS-PAGE and immunoblotted with anti-ELF1 (Cat# [TA811235])(1:2000).



Western blot analysis of extracts (35ug) from HUVEC cell line by using anti-ELF1 monoclonal antibody (1:500).