

Product datasheet for **CF811229**

SorLA (SORL1) Mouse Monoclonal Antibody [Clone ID: OTI2D5]

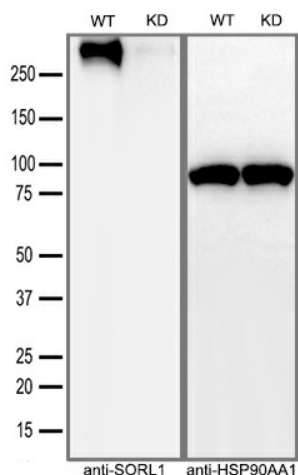
Product data:

Product Type:	Primary Antibodies
Clone Name:	OTI2D5
Applications:	IHC, WB
Recommended Dilution:	WB 1:500~2000, IHC 1:2000
Reactivity:	Human, Rat, Mouse
Host:	Mouse
Isotype:	IgG2b
Clonality:	Monoclonal
Immunogen:	Human recombinant protein fragment corresponding to amino acids 573-753 of human SORL1 (NP_003096) produced in E.coli.
Formulation:	Lyophilized powder (original buffer 1X PBS, pH 7.3, 8% trehalose)
Reconstitution Method:	For reconstitution, we recommend adding 100uL distilled water to a final antibody concentration of about 1 mg/mL. To use this carrier-free antibody for conjugation experiment, we strongly recommend performing another round of desalting process. (OriGene recommends Zeba Spin Desalting Columns, 7KMWCO from Thermo Scientific)
Purification:	Purified from mouse ascites fluids or tissue culture supernatant by affinity chromatography (protein A/G)
Conjugation:	Unconjugated
Storage:	Store at -20°C as received.
Stability:	Stable for 12 months from date of receipt.
Gene Name:	sortilin related receptor 1
Database Link:	NP_003096 Entrez Gene 20660 Mouse Entrez Gene 300652 Rat Entrez Gene 6653 Human Q92673
Synonyms:	C11orf32; gp250; LR11; LRP9; SORLA; SorLA-1
Protein Families:	Druggable Genome, Transmembrane

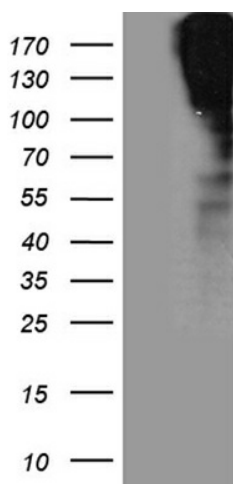


[View online »](#)

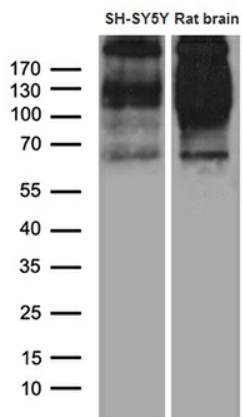
Product images:



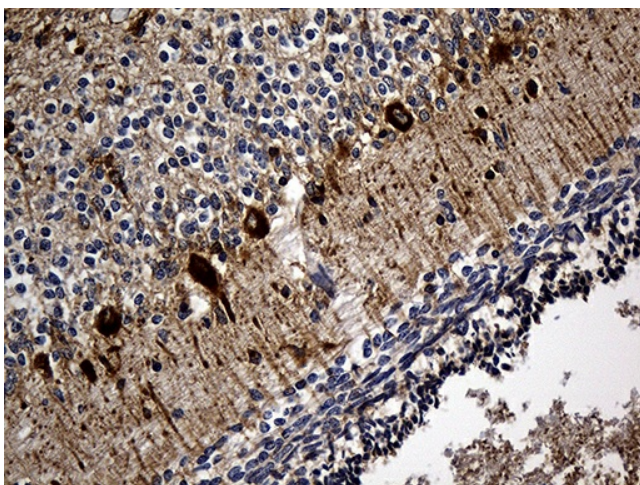
Equivalent amounts of cell lysates (30 ug per lane) of wild-type HeLa cells (WT) and SORL1-Knockdown HeLa cells (KD) were separated by SDS-PAGE and immunoblotted with anti-SORL1 monoclonal antibody [TA811229] (1:2500). Then the blotted membrane was stripped and reprobed with anti-HSP90AA1 antibody as a loading control.



HEK293T cells were transfected with the pCMV6-ENTRY control (Cat# [PS100001], Left lane) or pCMV6-ENTRY SORL1 (Cat# [RC214154], Right lane) cDNA for 48 hrs and lysed. Equivalent amounts of cell lysates (5 ug per lane) were separated by SDS-PAGE and immunoblotted with anti-SORL1 (Cat# [TA811229])(1:2000).



Western blot analysis of extracts (35ug) from SH-SY5Y cell line and rat brain tissue lysate by using anti-SORL1 monoclonal antibody (1:500).



Immunohistochemical staining of paraffin-embedded Human embryonic cerebellum within the normal limits using anti-SORL1 mouse monoclonal antibody. Heat-induced epitope retrieval by EDTA solution buffer pH 8.0 at 120°C for 3 min.