

## Product datasheet for **CF811228**

### TRPM8 Mouse Monoclonal Antibody [Clone ID: OTI7A11]

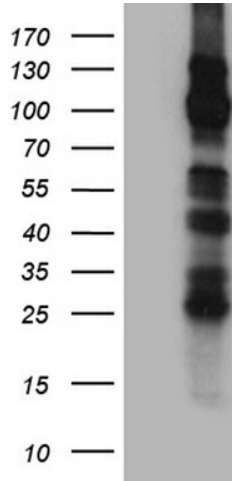
#### Product data:

Product Type:	Primary Antibodies
Clone Name:	OTI7A11
Applications:	WB
Recommended Dilution:	WB 1:2000
Reactivity:	Human, Mouse, Rat
Host:	Mouse
Isotype:	IgG1
Clonality:	Monoclonal
Immunogen:	Human recombinant protein fragment corresponding to amino acids 1-300 of human TRPM8 (NP_076985) produced in E.coli.
Formulation:	Lyophilized powder (original buffer 1X PBS, pH 7.3, 8% trehalose)
Reconstitution Method:	For reconstitution, we recommend adding 100uL distilled water to a final antibody concentration of about 1 mg/mL. To use this carrier-free antibody for conjugation experiment, we strongly recommend performing another round of desalting process. (OriGene recommends Zeba Spin Desalting Columns, 7KMWCO from Thermo Scientific)
Purification:	Purified from mouse ascites fluids or tissue culture supernatant by affinity chromatography (protein A/G)
Conjugation:	Unconjugated
Storage:	Store at -20°C as received.
Stability:	Stable for 12 months from date of receipt.
Predicted Protein Size:	127.5 kDa
Gene Name:	transient receptor potential cation channel subfamily M member 8
Database Link:	<a href="#">NP_076985</a> <a href="#">Entrez Gene 171382 MouseEntrez Gene 171384 RatEntrez Gene 79054 Human Q7Z2W7</a>
Synonyms:	LTRPC6; TRPP8
Protein Families:	Druggable Genome, Ion Channels: Transient receptor potential, Transmembrane

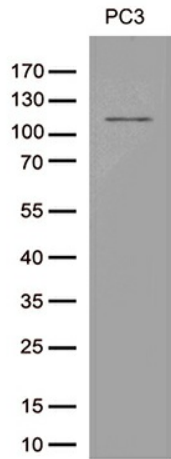


[View online »](#)

**Product images:**



HEK293T cells were transfected with the pCMV6-ENTRY control (Cat# [PS100001], Left lane) or pCMV6-ENTRY TRPM8 (Cat# [RC220615], Right lane) cDNA for 48 hrs and lysed. Equivalent amounts of cell lysates (5 ug per lane) were separated by SDS-PAGE and immunoblotted with anti-TRPM8 (Cat# [TA811228])(1:2000). Positive lysates [LY402977] (100ug) and [LC402977] (20ug) can be purchased separately from OriGene.



Western blot analysis of extracts (35ug) from cell line by using anti-TRPM8 monoclonal antibody (1:500).