

## Product datasheet for **CF811227**

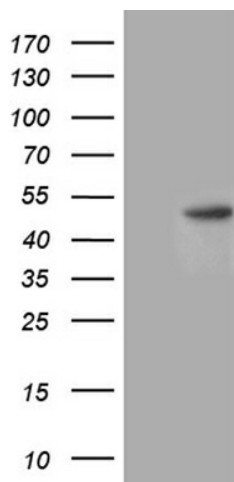
### AMCase (CHIA) Mouse Monoclonal Antibody [Clone ID: OTI1B8]

#### Product data:

Product Type:	Primary Antibodies
Clone Name:	OTI1B8
Applications:	WB
Recommended Dilution:	WB 1:500
Reactivity:	Human
Host:	Mouse
Isotype:	IgG1
Clonality:	Monoclonal
Immunogen:	Full length human recombinant protein of human CHIA (NP_068569) produced in E.coli.
Formulation:	Lyophilized powder (original buffer 1X PBS, pH 7.3, 8% trehalose)
Reconstitution Method:	For reconstitution, we recommend adding 100uL distilled water to a final antibody concentration of about 1 mg/mL. To use this carrier-free antibody for conjugation experiment, we strongly recommend performing another round of desalting process. (OriGene recommends Zeba Spin Desalting Columns, 7KMWCO from Thermo Scientific)
Purification:	Purified from mouse ascites fluids or tissue culture supernatant by affinity chromatography (protein A/G)
Conjugation:	Unconjugated
Storage:	Store at -20°C as received.
Stability:	Stable for 12 months from date of receipt.
Predicted Protein Size:	40 kDa
Gene Name:	chitinase acidic
Database Link:	<a href="#">NP_068569</a> <a href="#">Entrez Gene 27159 Human</a> <a href="#">Q9BZP6</a>
Synonyms:	AMCASE; CHIT2; TSA1902
Protein Families:	Secreted Protein
Protein Pathways:	Amino sugar and nucleotide sugar metabolism



[View online »](#)

**Product images:**

HEK293T cells were transfected with the pCMV6-ENTRY control (Left lane) or pCMV6-ENTRY CHIA ([RC206441], Right lane) cDNA for 48 hrs and lysed. Equivalent amounts of cell lysates (5 ug per lane) were separated by SDS-PAGE and immunoblotted with anti-CHIA (1:500). Positive lysates [LY411918] (100ug) and [LC411918] (20ug) can be purchased separately from OriGene.