

Product datasheet for **CF811216**

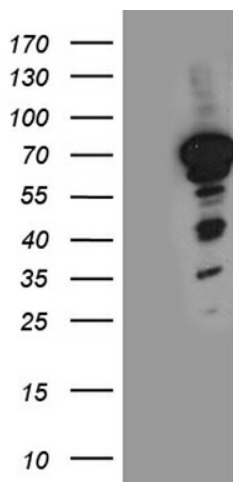
Nuclear Factor 1 (NFIA) Mouse Monoclonal Antibody [Clone ID: OTI6F1]

Product data:

Product Type:	Primary Antibodies
Clone Name:	OTI6F1
Applications:	WB
Recommended Dilution:	WB 1:2000
Reactivity:	Human, Mouse, Rat
Host:	Mouse
Isotype:	IgG1
Clonality:	Monoclonal
Immunogen:	Human recombinant protein fragment corresponding to amino acids 200-509 of human NFIA (NP_001128145) produced in E.coli.
Formulation:	Lyophilized powder (original buffer 1X PBS, pH 7.3, 8% trehalose)
Reconstitution Method:	For reconstitution, we recommend adding 100uL distilled water to a final antibody concentration of about 1 mg/mL. To use this carrier-free antibody for conjugation experiment, we strongly recommend performing another round of desalting process. (OriGene recommends Zeba Spin Desalting Columns, 7KMWCO from Thermo Scientific)
Purification:	Purified from mouse ascites fluids or tissue culture supernatant by affinity chromatography (protein A/G)
Conjugation:	Unconjugated
Storage:	Store at -20°C as received.
Stability:	Stable for 12 months from date of receipt.
Predicted Protein Size:	55.8 kDa
Gene Name:	nuclear factor I A
Database Link:	NP_001128145 Entrez Gene 18027 Mouse Entrez Gene 25492 Rat Entrez Gene 4774 Human Q12857
Synonyms:	A; CTF; NF-I; NF1-A; NFI-A; NFI-L
Protein Families:	Transcription Factors



[View online »](#)

Product images:

HEK293T cells were transfected with the pCMV6-ENTRY control (Left lane) or pCMV6-ENTRY NFIA ([RC225878], Right lane) cDNA for 48 hrs and lysed. Equivalent amounts of cell lysates (5 ug per lane) were separated by SDS-PAGE and immunoblotted with anti-NFIA (1:2000). Positive lysates [LY427477] (100ug) and [LC427477] (20ug) can be purchased separately from OriGene.