

Product datasheet for **CF811193**

AIF (AIFM1) Mouse Monoclonal Antibody [Clone ID: OTI5D2]

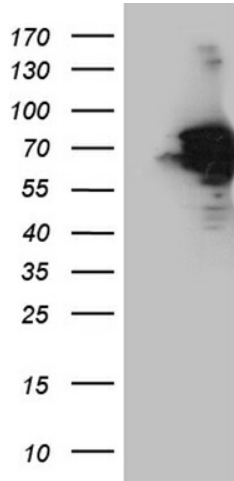
Product data:

Product Type:	Primary Antibodies
Clone Name:	OTI5D2
Applications:	IHC, WB
Recommended Dilution:	WB 1:500~2000, IHC 1:500
Reactivity:	Human, Mouse, Rat
Host:	Mouse
Isotype:	IgG2a
Clonality:	Monoclonal
Immunogen:	Human recombinant protein fragment corresponding to amino acids 134-483 of human AIFM1 (NP_001124318) produced in E.coli.
Formulation:	Lyophilized powder (original buffer 1X PBS, pH 7.3, 8% trehalose)
Reconstitution Method:	For reconstitution, we recommend adding 100uL distilled water to a final antibody concentration of about 1 mg/mL. To use this carrier-free antibody for conjugation experiment, we strongly recommend performing another round of desalting process. (OriGene recommends Zeba Spin Desalting Columns, 7KMWCO from Thermo Scientific)
Purification:	Purified from mouse ascites fluids or tissue culture supernatant by affinity chromatography (protein A/G)
Conjugation:	Unconjugated
Storage:	Store at -20°C as received.
Stability:	Stable for 12 months from date of receipt.
Gene Name:	apoptosis inducing factor mitochondria associated 1
Database Link:	NP_001124318 Entrez Gene 26926 Mouse Entrez Gene 83533 Rat Entrez Gene 9131 Human O95831
Synonyms:	AIF; CMT2D; CMTX4; COWCK; COXPD6; NADMR; NAMSD; PDCD8
Protein Families:	Druggable Genome, Transmembrane
Protein Pathways:	Apoptosis

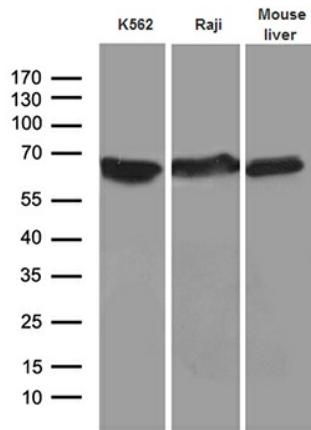


[View online »](#)

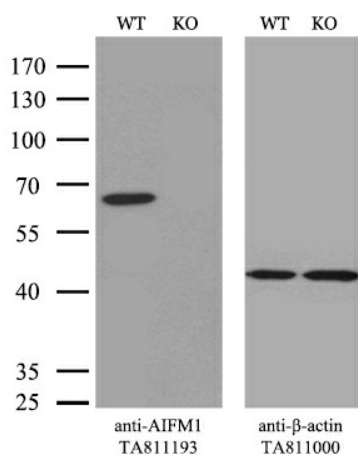
Product images:



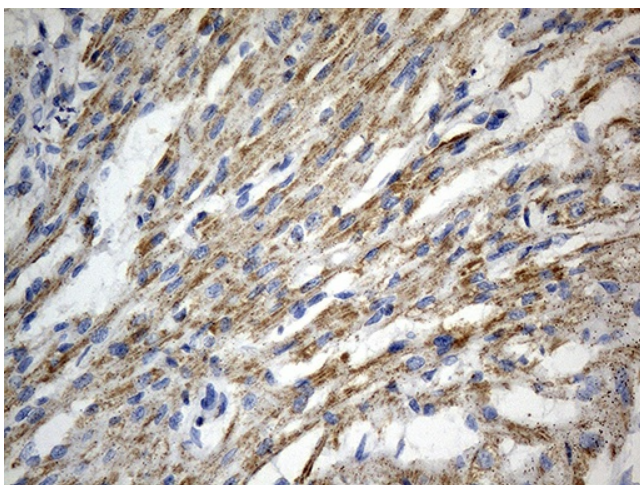
HEK293T cells were transfected with the pCMV6-ENTRY control (Left lane) or pCMV6-ENTRY AIFM1 ([RC225349], Right lane) cDNA for 48 hrs and lysed. Equivalent amounts of cell lysates (5 ug per lane) were separated by SDS-PAGE and immunoblotted with anti-AIFM1 (1:2000).



Western blot analysis of extracts (35ug) from 2 different cell lines and mouse liver tissue lysate by using anti-AIFM1 monoclonal antibody (1:500).



Equivalent amounts of cell lysates (10 ug per lane) of wild-type 293T cells (WT, Cat# LC810293T) and AIFM1-Knockout 293T cells (KO, Cat# [LC811853]) were separated by SDS-PAGE and immunoblotted with anti-AIFM1 monoclonal antibody [TA811193], (1:500). Then the blotted membrane was stripped and reprobed with anti- β -actin antibody ([TA811000]) as a loading control.



Immunohistochemical staining of paraffin-embedded Human adult heart tissue within the normal limits using anti-AIFM1 mouse monoclonal antibody. Heat-induced epitope retrieval by EDTA solution buffer pH 8.0 at 120°C for 3 min.