

## Product datasheet for **CF811190**

### CCDC27 Mouse Monoclonal Antibody [Clone ID: OTI1F8]

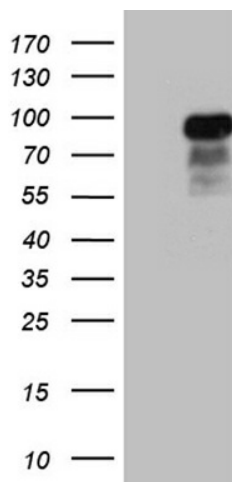
#### Product data:

Product Type:	Primary Antibodies
Clone Name:	OTI1F8
Applications:	WB
Recommended Dilution:	WB 1:500~2000
Reactivity:	Human
Host:	Mouse
Isotype:	IgG2a
Clonality:	Monoclonal
Immunogen:	Full length human recombinant protein of human CCDC27 (NP_689705) produced in E.coli.
Formulation:	Lyophilized powder (original buffer 1X PBS, pH 7.3, 8% trehalose)
Reconstitution Method:	For reconstitution, we recommend adding 100uL distilled water to a final antibody concentration of about 1 mg/mL. To use this carrier-free antibody for conjugation experiment, we strongly recommend performing another round of desalting process. (OriGene recommends Zeba Spin Desalting Columns, 7KMWCO from Thermo Scientific)
Purification:	Purified from mouse ascites fluids or tissue culture supernatant by affinity chromatography (protein A/G)
Conjugation:	Unconjugated
Storage:	Store at -20°C as received.
Stability:	Stable for 12 months from date of receipt.
Predicted Protein Size:	75.2 kDa
Gene Name:	coiled-coil domain containing 27
Database Link:	<a href="#">NP_689705</a> <a href="#">Entrez Gene 148870 Human</a> <a href="#">Q2M243</a>
Synonyms:	RP1-286D6.1

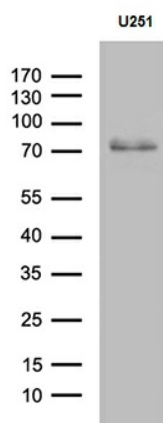


[View online »](#)

## Product images:



HEK293T cells were transfected with the pCMV6-ENTRY control (Cat# [PS100001], Left lane) or pCMV6-ENTRY CCDC27 (Cat# [RC211330], Right lane) cDNA for 48 hrs and lysed. Equivalent amounts of cell lysates (5 ug per lane) were separated by SDS-PAGE and immunoblotted with anti-CCDC27 (Cat# [TA811190])(1:2000). Positive lysates [LY407499] (100ug) and [LC407499] (20ug) can be purchased separately from OriGene.



Western blot analysis of extracts (35ug) from U251 cell line by using anti-CCDC27 monoclonal antibody (1:500).