

Product datasheet for **CF811187**

PPM1D Mouse Monoclonal Antibody [Clone ID: OTI3E1]

Product data:

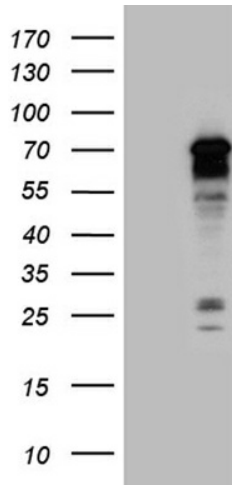
Product Type:	Primary Antibodies
Clone Name:	OTI3E1
Applications:	WB
Recommended Dilution:	WB 1:500~2000
Reactivity:	Human, Mouse, Rat
Host:	Mouse
Isotype:	IgG1
Clonality:	Monoclonal
Immunogen:	Human recombinant protein fragment corresponding to amino acids 1-375 of human PPM1D (NP_003611) produced in E.coli.
Formulation:	Lyophilized powder (original buffer 1X PBS, pH 7.3, 8% trehalose)
Reconstitution Method:	For reconstitution, we recommend adding 100uL distilled water to a final antibody concentration of about 1 mg/mL. To use this carrier-free antibody for conjugation experiment, we strongly recommend performing another round of desalting process. (OriGene recommends Zeba Spin Desalting Columns, 7KMWCO from Thermo Scientific)
Purification:	Purified from mouse ascites fluids or tissue culture supernatant by affinity chromatography (protein A/G)
Conjugation:	Unconjugated
Storage:	Store at -20°C as received.
Stability:	Stable for 12 months from date of receipt.
Predicted Protein Size:	66.5 kDa
Gene Name:	protein phosphatase, Mg ²⁺ /Mn ²⁺ dependent 1D
Database Link:	NP_003611 Entrez Gene 53892 Mouse Entrez Gene 287585 Rat Entrez Gene 8493 Human Q15297
Synonyms:	PP2C-DELTA; WIP1
Protein Families:	Druggable Genome, Phosphatase



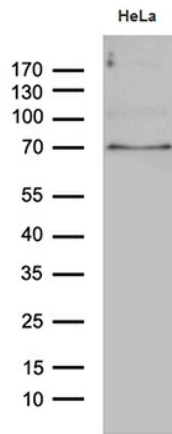
[View online »](#)

Protein Pathways: p53 signaling pathway

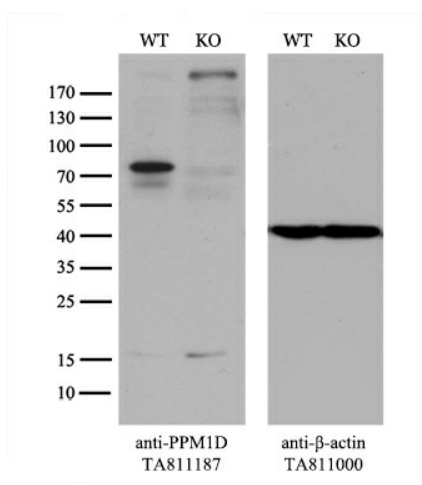
Product images:



HEK293T cells were transfected with the pCMV6-ENTRY control (Cat# [PS100001], Left lane) or pCMV6-ENTRY PPM1D (Cat# [RC209328], Right lane) cDNA for 48 hrs and lysed. Equivalent amounts of cell lysates (5 ug per lane) were separated by SDS-PAGE and immunoblotted with anti-PPM1D (Cat# [TA811187])(1:2000). Positive lysates [LY418539] (100ug) and [LC418539] (20ug) can be purchased separately from OriGene.



Western blot analysis of extracts (35ug) from HELA cell lines by using anti-PPM1D monoclonal antibody (1:500).



Equivalent amounts of cell lysates (10 ug per lane) of wild-type 293T cells (WT, Cat# LC810293T) and PPM1D-Knockout 293T cells (KO, Cat# [LC840309]) were separated by SDS-PAGE and immunoblotted with anti-PPM1D monoclonal antibody [TA811187], (1:200). Then the blotted membrane was stripped and reprobbed with anti- β -actin antibody ([TA811000]) as a loading control.