

Product datasheet for **CF811183**

AMCase (CHIA) Mouse Monoclonal Antibody [Clone ID: OTI3H4]

Product data:

Product Type:	Primary Antibodies
Clone Name:	OTI3H4
Applications:	IHC, WB
Recommended Dilution:	WB 1:500~2000, IHC 1:2000
Reactivity:	Human
Host:	Mouse
Isotype:	IgG2a
Clonality:	Monoclonal
Immunogen:	Full length human Recombinant protein of human CHIA (NP_068569) produced in E.coli.
Formulation:	Lyophilized powder (original buffer 1X PBS, pH 7.3, 8% trehalose)
Reconstitution Method:	For reconstitution, we recommend adding 100uL distilled water to a final antibody concentration of about 1 mg/mL. To use this carrier-free antibody for conjugation experiment, we strongly recommend performing another round of desalting process. (OriGene recommends Zeba Spin Desalting Columns, 7KMWCO from Thermo Scientific)
Purification:	Purified from mouse ascites fluids or tissue culture supernatant by affinity chromatography (protein A/G)
Conjugation:	Unconjugated
Storage:	Store at -20°C as received.
Stability:	Stable for 12 months from date of receipt.
Gene Name:	chitinase acidic
Database Link:	NP_068569 Entrez Gene 27159 Human Q9BZP6
Background:	The protein encoded by this gene degrades chitin, which is found in the cell wall of most fungi as well as in arthropods and some nematodes. The encoded protein can also stimulate interleukin 13 expression, and variations in this gene can lead to asthma susceptibility. Several transcript variants encoding a few different isoforms have been found for this gene. [provided by RefSeq, Apr 2012]



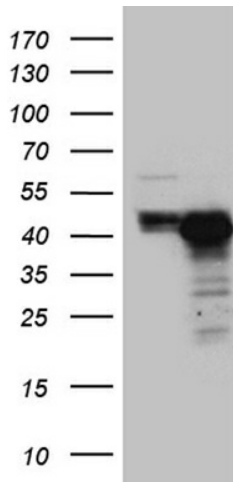
[View online »](#)

Synonyms: AMCASE; CHIT2; TSA1902

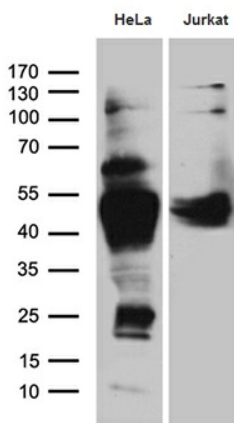
Protein Families: Secreted Protein

Protein Pathways: Amino sugar and nucleotide sugar metabolism

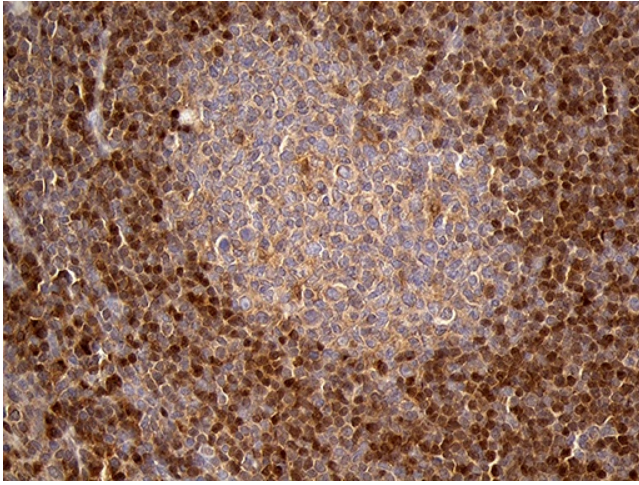
Product images:



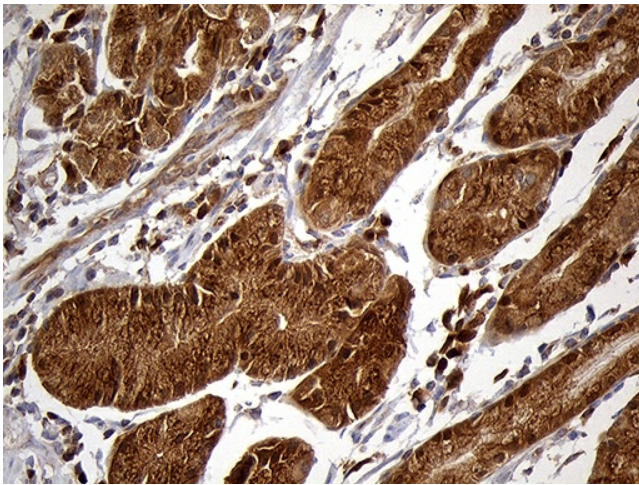
HEK293T cells were transfected with the pCMV6-ENTRY control (Cat# [PS100001], Left lane) or pCMV6-ENTRY CHIA (Cat# [RC206441], Right lane) cDNA for 48 hrs and lysed. Equivalent amounts of cell lysates (5 ug per lane) were separated by SDS-PAGE and immunoblotted with anti-CHIA (Cat# [TA811183])(1:2000). Positive lysates [LY411918] (100ug) and [LC411918] (20ug) can be purchased separately from OriGene.



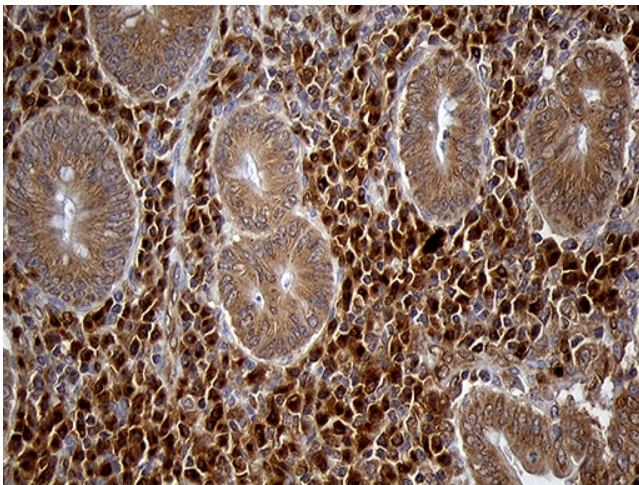
Western blot analysis of extracts (35ug) from 2 different cell lines by using anti-CHIA monoclonal antibody (1:500).



Immunohistochemical staining of paraffin-embedded Human tonsil within the normal limits using anti-CHIA mouse monoclonal antibody. Heat-induced epitope retrieval by EDTA solution buffer pH 8.0 at 120°C for 3 min.



Immunohistochemical staining of paraffin-embedded Human gastric tissue within the normal limits using anti-CHIA mouse monoclonal antibody. Heat-induced epitope retrieval by EDTA solution buffer pH 8.0 at 120°C for 3 min.



Immunohistochemical staining of paraffin-embedded Human appendix tissue within the normal limits using anti-CHIA mouse monoclonal antibody. Heat-induced epitope retrieval by EDTA solution buffer pH 8.0 at 120°C for 3 min.