

Product datasheet for **CF811174**

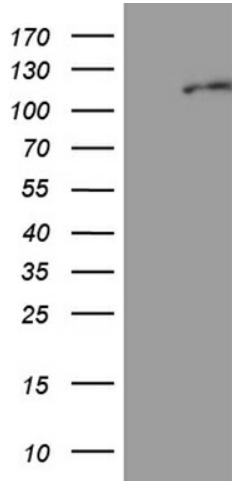
AGO1 Mouse Monoclonal Antibody [Clone ID: OTI2E8]

Product data:

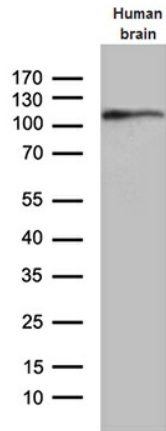
Product Type:	Primary Antibodies
Clone Name:	OTI2E8
Applications:	WB
Recommended Dilution:	WB 1:500~2000
Reactivity:	Human, Mouse, Rat
Host:	Mouse
Isotype:	IgG1
Clonality:	Monoclonal
Immunogen:	Human recombinant protein fragment corresponding to amino acids 226-490 of human EIF2C1 (NP_036331) produced in E.coli.
Formulation:	Lyophilized powder (original buffer 1X PBS, pH 7.3, 8% trehalose)
Reconstitution Method:	For reconstitution, we recommend adding 100uL distilled water to a final antibody concentration of about 1 mg/mL. To use this carrier-free antibody for conjugation experiment, we strongly recommend performing another round of desalting process. (OriGene recommends Zeba Spin Desalting Columns, 7KMWCO from Thermo Scientific)
Purification:	Purified from mouse ascites fluids or tissue culture supernatant by affinity chromatography (protein A/G)
Conjugation:	Unconjugated
Storage:	Store at -20°C as received.
Stability:	Stable for 12 months from date of receipt.
Predicted Protein Size:	97 kDa
Gene Name:	argonaute RISC component 1
Database Link:	NP_036331 Entrez Gene 236511 MouseEntrez Gene 313594 RatEntrez Gene 26523 Human Q9UL18
Synonyms:	EIF2C; EIF2C1; GERP95; Q99
Protein Families:	Druggable Genome



[View online »](#)

Product images:


HEK293T cells were transfected with the pCMV6-ENTRY control (Left lane) or pCMV6-ENTRY EIF2C1 ([RC209163], Right lane) cDNA for 48 hrs and lysed. Equivalent amounts of cell lysates (5 ug per lane) were separated by SDS-PAGE and immunoblotted with anti-EIF2C1 (1:2000). Positive lysates [LY402163] (100ug) and [LC402163] (20ug) can be purchased separately from OriGene.



Western blot analysis of extracts (35ug) from human brain tissue lysate by using anti-EIF2C1 monoclonal antibody (1:500).