

## Product datasheet for **CF811159**

### FE65 (APBB1) Mouse Monoclonal Antibody [Clone ID: OTI3H9]

#### Product data:

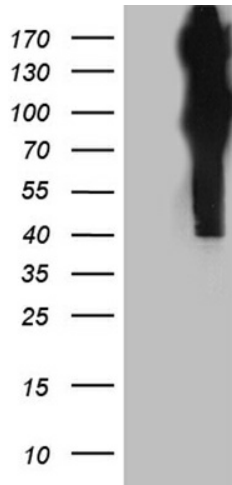
Product Type:	Primary Antibodies
Clone Name:	OTI3H9
Applications:	WB
Recommended Dilution:	WB 1:500~2000
Reactivity:	Human, Mouse, Rat
Host:	Mouse
Isotype:	IgG1
Clonality:	Monoclonal
Immunogen:	Full length human recombinant protein of human APBB1 (NP_001155) produced in HEK293T cell.
Formulation:	Lyophilized powder (original buffer 1X PBS, pH 7.3, 8% trehalose)
Reconstitution Method:	For reconstitution, we recommend adding 100uL distilled water to a final antibody concentration of about 1 mg/mL. To use this carrier-free antibody for conjugation experiment, we strongly recommend performing another round of desalting process. (OriGene recommends Zeba Spin Desalting Columns, 7KMWCO from Thermo Scientific)
Purification:	Purified from mouse ascites fluids or tissue culture supernatant by affinity chromatography (protein A/G)
Conjugation:	Unconjugated
Storage:	Store at -20°C as received.
Stability:	Stable for 12 months from date of receipt.
Predicted Protein Size:	77.1 kDa
Gene Name:	amyloid beta precursor protein binding family B member 1
Database Link:	<a href="#">NP_001155</a> <a href="#">Entrez Gene 11785 Mouse</a> <a href="#">Entrez Gene 29722 Rat</a> <a href="#">Entrez Gene 322 Human</a> <a href="#">O00213</a>
Synonyms:	FE65; MGC:9072; RIR
Protein Families:	Transcription Factors



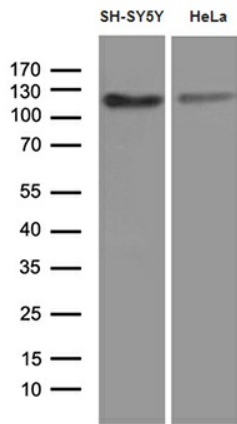
[View online »](#)

Protein Pathways: Alzheimer's disease

**Product images:**



HEK293T cells were transfected with the pCMV6-ENTRY control (Cat# [PS100001], Left lane) or pCMV6-ENTRY APBB1 (Cat# [RC202003], Right lane) cDNA for 48 hrs and lysed. Equivalent amounts of cell lysates (5 ug per lane) were separated by SDS-PAGE and immunoblotted with anti-APBB1 (1:2000) (Cat# [TA811159]). Positive lysates [LY400467] (100ug) and [LC400467] (20ug) can be purchased separately from OriGene.



Western blot analysis of extracts (35ug) from 2 different cell lines by using anti-APBB1 monoclonal antibody (1:500).