

Product datasheet for CF811151

FE65 (APBB1) Mouse Monoclonal Antibody [Clone ID: OT11G6]

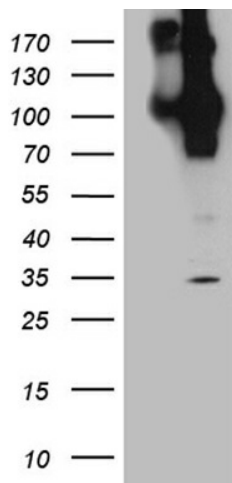
Product data:

Product Type:	Primary Antibodies
Clone Name:	OT11G6
Applications:	WB
Recommended Dilution:	WB 1:2000
Reactivity:	Human, Mouse, Rat
Host:	Mouse
Isotype:	IgG2a
Clonality:	Monoclonal
Immunogen:	Full length human recombinant protein of human APBB1 (NP_001155) produced in HEK293T cell.
Formulation:	Lyophilized powder (original buffer 1X PBS, pH 7.3, 8% trehalose)
Reconstitution Method:	For reconstitution, we recommend adding 100uL distilled water to a final antibody concentration of about 1 mg/mL. To use this carrier-free antibody for conjugation experiment, we strongly recommend performing another round of desalting process. (OriGene recommends Zeba Spin Desalting Columns, 7KMWCO from Thermo Scientific)
Purification:	Purified from mouse ascites fluids or tissue culture supernatant by affinity chromatography (protein A/G)
Conjugation:	Unconjugated
Storage:	Store at -20°C as received.
Stability:	Stable for 12 months from date of receipt.
Predicted Protein Size:	77.1 kDa
Gene Name:	amyloid beta precursor protein binding family B member 1
Database Link:	NP_001155 Entrez Gene 11785 Mouse Entrez Gene 29722 Rat Entrez Gene 322 Human O00213
Synonyms:	FE65; MGC:9072; RIR
Protein Families:	Transcription Factors


[View online »](#)

Protein Pathways: Alzheimer's disease

Product images:



HEK293T cells were transfected with the pCMV6-ENTRY control (Left lane) or pCMV6-ENTRY APBB1 ([RC202003], Right lane) cDNA for 48 hrs and lysed. Equivalent amounts of cell lysates (5 ug per lane) were separated by SDS-PAGE and immunoblotted with anti-APBB1 (1:2000). Positive lysates [LY400467] (100ug) and [LC400467] (20ug) can be purchased separately from OriGene.