

Product datasheet for **CF811148**

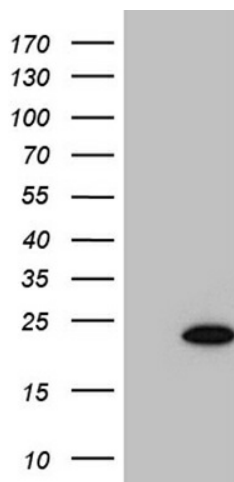
SF3B14 (SF3B6) Mouse Monoclonal Antibody [Clone ID: OTI8A1]

Product data:

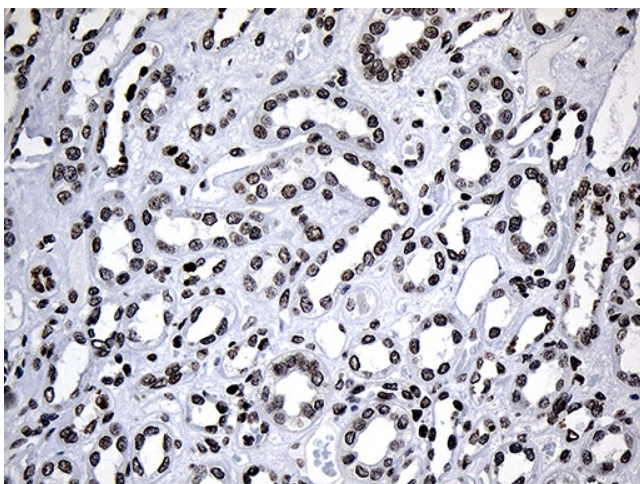
Product Type:	Primary Antibodies
Clone Name:	OTI8A1
Applications:	IHC, WB
Recommended Dilution:	WB 1:2000, IHC 1:1000
Reactivity:	Human, Mouse, Rat
Host:	Mouse
Isotype:	IgG2b
Clonality:	Monoclonal
Immunogen:	Full length human recombinant protein of human SF3B14 (NP_057131) produced in E.coli.
Formulation:	Lyophilized powder (original buffer 1X PBS, pH 7.3, 8% trehalose)
Reconstitution Method:	For reconstitution, we recommend adding 100uL distilled water to a final antibody concentration of about 1 mg/mL. To use this carrier-free antibody for conjugation experiment, we strongly recommend performing another round of desalting process. (OriGene recommends Zeba Spin Desalting Columns, 7KMWCO from Thermo Scientific)
Purification:	Purified from mouse ascites fluids or tissue culture supernatant by affinity chromatography (protein A/G)
Conjugation:	Unconjugated
Storage:	Store at -20°C as received.
Stability:	Stable for 12 months from date of receipt.
Predicted Protein Size:	14.4 kDa
Gene Name:	splicing factor 3b subunit 6
Database Link:	NP_057131 Entrez Gene 66055 MouseEntrez Gene 100365504 RatEntrez Gene 51639 Human Q9Y3B4
Synonyms:	CGI-110; HSPC175; Ht006; P14; SAP14; SAP14a; SF3B14; SF3B14a
Protein Pathways:	Spliceosome



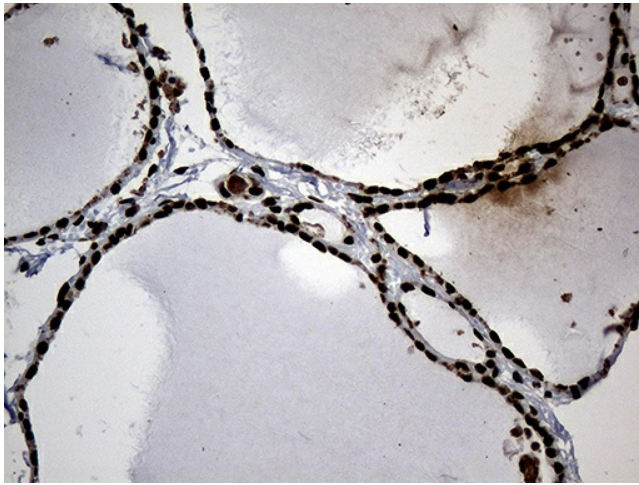
[View online »](#)

Product images:

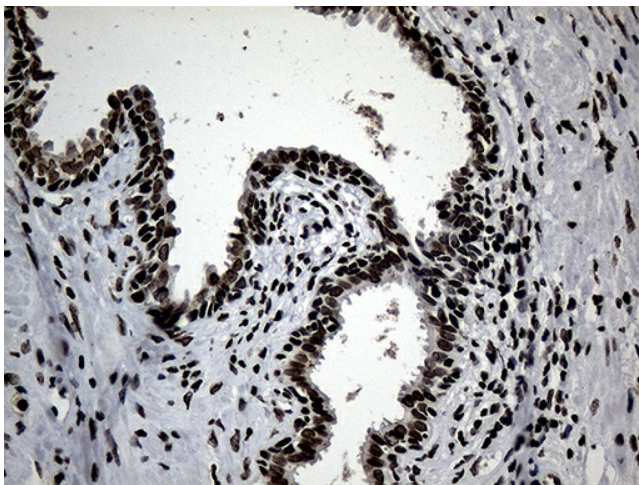
HEK293T cells were transfected with the pCMV6-ENTRY control (Cat# [PS100001], Left lane) or pCMV6-ENTRY SF3B14 (Cat# [RC201866], Right lane) cDNA for 48 hrs and lysed. Equivalent amounts of cell lysates (5 ug per lane) were separated by SDS-PAGE and immunoblotted with anti-SF3B14 (Cat# [TA811148])(1:2000). Positive lysates [LY414228] (100ug) and [LC414228] (20ug) can be purchased separately from OriGene.



Immunohistochemical staining of paraffin-embedded Human Kidney tissue within the normal limits using anti-SF3B14 mouse monoclonal antibody. (Heat-induced epitope retrieval by 1mM EDTA in 10mM Tris buffer (pH8.5) at 120°C for 3min, [TA811148]) (1:1000)



Immunohistochemical staining of paraffin-embedded Human thyroid tissue within the normal limits using anti-SF3B14 mouse monoclonal antibody. (Heat-induced epitope retrieval by 1mM EDTA in 10mM Tris buffer (pH8.5) at 120°C for 3min, [TA811148]) (1:1000)



Immunohistochemical staining of paraffin-embedded Human prostate tissue within the normal limits using anti-SF3B14 mouse monoclonal antibody. (Heat-induced epitope retrieval by 1mM EDTA in 10mM Tris buffer (pH8.5) at 120°C for 3min, [TA811148]) (1:1000)