

## Product datasheet for **CF811107**

### SMARCD3 Mouse Monoclonal Antibody [Clone ID: OTI4G3]

#### Product data:

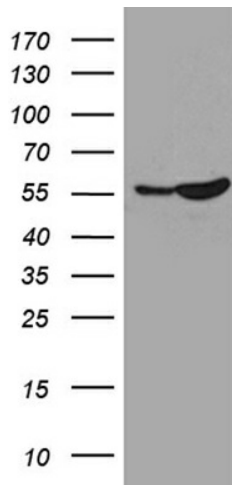
Product Type:	Primary Antibodies
Clone Name:	OTI4G3
Applications:	WB
Recommended Dilution:	WB 1:500~2000
Reactivity:	Human, Mouse, Rat
Host:	Mouse
Isotype:	IgG1
Clonality:	Monoclonal
Immunogen:	Full length human recombinant protein of human SMARCD3 (NP_001003802) produced in E.coli.
Formulation:	Lyophilized powder (original buffer 1X PBS, pH 7.3, 8% trehalose)
Reconstitution Method:	For reconstitution, we recommend adding 100uL distilled water to a final antibody concentration of about 1 mg/mL. To use this carrier-free antibody for conjugation experiment, we strongly recommend performing another round of desalting process. (OriGene recommends Zeba Spin Desalting Columns, 7KMWCO from Thermo Scientific)
Purification:	Purified from mouse ascites fluids or tissue culture supernatant by affinity chromatography (protein A/G)
Conjugation:	Unconjugated
Storage:	Store at -20°C as received.
Stability:	Stable for 12 months from date of receipt.
Predicted Protein Size:	53.5 kDa
Gene Name:	SWI/SNF related, matrix associated, actin dependent regulator of chromatin, subfamily d, member 3
Database Link:	<a href="#">NP_001003802</a> <a href="#">Entrez Gene 66993 Mouse</a> <a href="#">Entrez Gene 296732 Rat</a> <a href="#">Entrez Gene 6604 Human</a> <a href="#">Q6STE5</a>
Synonyms:	BAF60C; CRACD3; Rsc6p



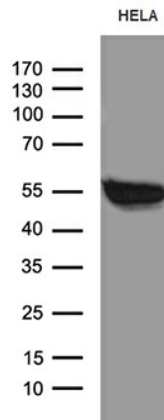
[View online »](#)

Protein Families: Druggable Genome, Transcription Factors

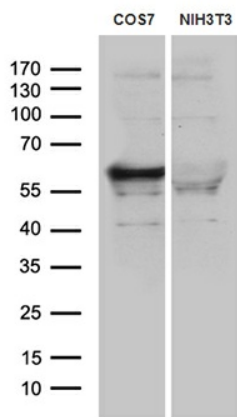
### Product images:



HEK293T cells were transfected with the pCMV6-ENTRY control (Cat# [PS100001], Left lane) or pCMV6-ENTRY SMARCD3 (Cat# [RC201135], Right lane) cDNA for 48 hrs and lysed. Equivalent amounts of cell lysates (5 ug per lane) were separated by SDS-PAGE and immunoblotted with anti-SMARCD3 (Cat# [TA811107])(1:2000). Positive lysates [LY424015] (100ug) and [LC424015] (20ug) can be purchased separately from OriGene.



Western blot analysis of extracts (35ug) from HELA cell line by using anti-SMARCD3 monoclonal antibody (1:500).



Western blot analysis of extracts (35ug) from cos7 and 3T3 cell lines by using anti-SMARCD3 monoclonal antibody (1:500).