

## Product datasheet for **CF811105**

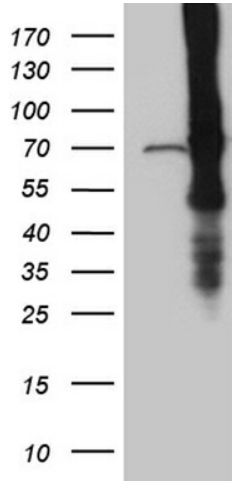
### ABCF2 Mouse Monoclonal Antibody [Clone ID: OT18F4]

#### Product data:

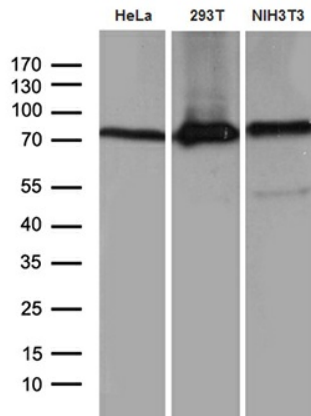
Product Type:	Primary Antibodies
Clone Name:	OT18F4
Applications:	IHC, WB
Recommended Dilution:	WB 1:500~2000, IHC 1:500
Reactivity:	Human, Mouse
Host:	Mouse
Isotype:	IgG1
Clonality:	Monoclonal
Immunogen:	Human recombinant protein fragment corresponding to amino acids 1-235 of human ABCF2 (NP_009120) produced in E.coli.
Formulation:	Lyophilized powder (original buffer 1X PBS, pH 7.3, 8% trehalose)
Reconstitution Method:	For reconstitution, we recommend adding 100uL distilled water to a final antibody concentration of about 1 mg/mL. To use this carrier-free antibody for conjugation experiment, we strongly recommend performing another round of desalting process. (OriGene recommends Zeba Spin Desalting Columns, 7KMWCO from Thermo Scientific)
Purification:	Purified from mouse ascites fluids or tissue culture supernatant by affinity chromatography (protein A/G)
Conjugation:	Unconjugated
Storage:	Store at -20°C as received.
Stability:	Stable for 12 months from date of receipt.
Predicted Protein Size:	71.1 kDa
Gene Name:	ATP binding cassette subfamily F member 2
Database Link:	<a href="#">NP_009120</a> <a href="#">Entrez Gene 27407 Mouse</a> <a href="#">Entrez Gene 10061 Human</a> <a href="#">Q9UG63</a>
Synonyms:	ABC28; EST133090; HUSSY-18; HUSSY18
Protein Families:	Druggable Genome



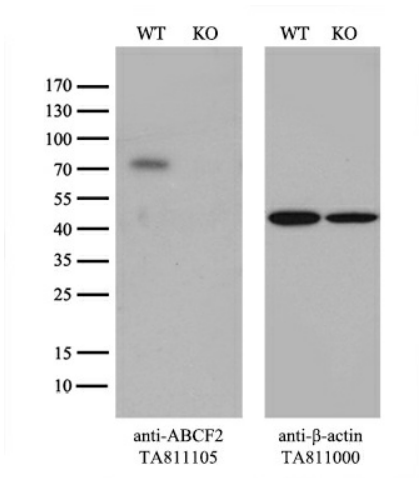
[View online »](#)

**Product images:**


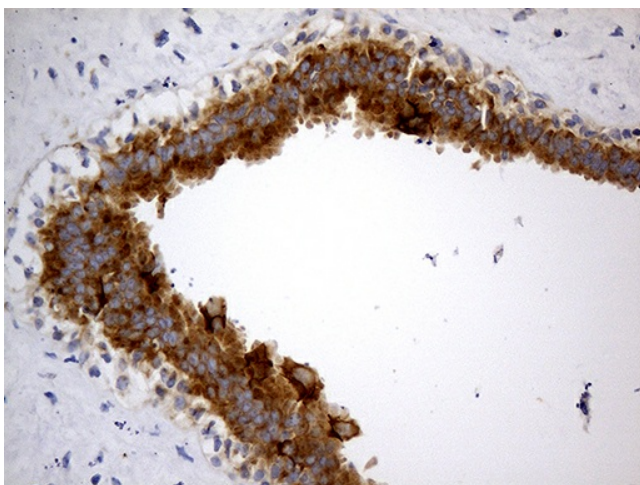
HEK293T cells were transfected with the pCMV6-ENTRY control (Cat# [PS100001], Left lane) or pCMV6-ENTRY ABCF2 (Cat# [RC200323], Right lane) cDNA for 48 hrs and lysed. Equivalent amounts of cell lysates (5 ug per lane) were separated by SDS-PAGE and immunoblotted with anti-ABCF2 (Cat# [TA811105])(1:2000). Positive lysates [LY402100] (100ug) and [LC402100] (20ug) can be purchased separately from OriGene.



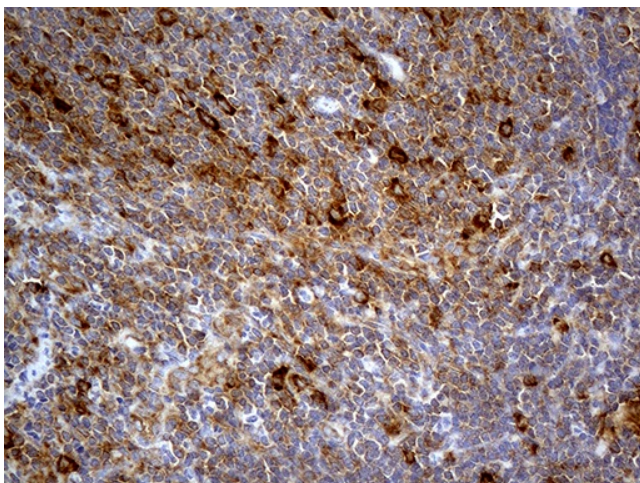
Western blot analysis of extracts (35ug) from 3 different cell lines by using anti-ABCF2 monoclonal antibody (1:500).



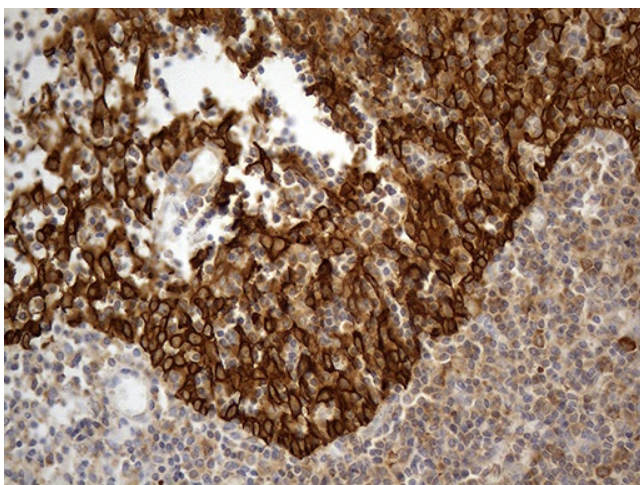
Equivalent amounts of cell lysates (10 ug per lane) of wild-type 293T cells (WT, Cat# LC810293T) and ABCF2-Knockout 293T cells (KO, Cat# [LC811907]) were separated by SDS-PAGE and immunoblotted with anti-ABCF2 monoclonal antibody [TA811105], (1:500). Then the blotted membrane was stripped and reprobed with anti-β-actin antibody ([TA811000]) as a loading control.



Immunohistochemical staining of paraffin-embedded Human breast tissue within the normal limits using anti-ABCF2 mouse monoclonal antibody. (Heat-induced epitope retrieval by 1mM EDTA in 10mM Tris buffer (pH8.5) at 120°C for 3min, [TA811105]) (1:500)



Immunohistochemical staining of paraffin-embedded Human lymphoma tissue using anti-ABCF2 mouse monoclonal antibody. (Heat-induced epitope retrieval by 1mM EDTA in 10mM Tris buffer (pH8.5) at 120°C for 3min, [TA811105]) (1:500)



Immunohistochemical staining of paraffin-embedded Human tonsil within the normal limits using anti-ABCF2 mouse monoclonal antibody. (Heat-induced epitope retrieval by 1mM EDTA in 10mM Tris buffer (pH8.5) at 120°C for 3min, [TA811105]) (1:500)