

## Product datasheet for **CF811103**

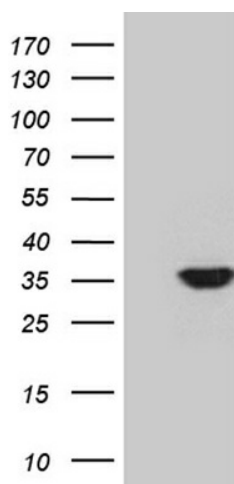
### **PDIK1L Mouse Monoclonal Antibody [Clone ID: OTI2D11]**

#### **Product data:**

<b>Product Type:</b>	Primary Antibodies
<b>Clone Name:</b>	OTI2D11
<b>Applications:</b>	WB
<b>Recommended Dilution:</b>	WB 1:2000
<b>Reactivity:</b>	Human, Mouse, Rat
<b>Host:</b>	Mouse
<b>Isotype:</b>	IgG1
<b>Clonality:</b>	Monoclonal
<b>Immunogen:</b>	Human recombinant protein fragment corresponding to amino acids 131-341 of human PDIK1L (NP_690048) produced in E.coli.
<b>Formulation:</b>	Lyophilized powder (original buffer 1X PBS, pH 7.3, 8% trehalose)
<b>Reconstitution Method:</b>	For reconstitution, we recommend adding 100uL distilled water to a final antibody concentration of about 1 mg/mL. To use this carrier-free antibody for conjugation experiment, we strongly recommend performing another round of desalting process. (OriGene recommends Zeba Spin Desalting Columns, 7KMWCO from Thermo Scientific)
<b>Purification:</b>	Purified from mouse ascites fluids or tissue culture supernatant by affinity chromatography (protein A/G)
<b>Conjugation:</b>	Unconjugated
<b>Storage:</b>	Store at -20°C as received.
<b>Stability:</b>	Stable for 12 months from date of receipt.
<b>Predicted Protein Size:</b>	38.4 kDa
<b>Gene Name:</b>	PDLIM1 interacting kinase 1 like
<b>Database Link:</b>	<a href="#">NP_690048</a> <a href="#">Entrez Gene 230809 Mouse</a> <a href="#">Entrez Gene 313609 Rat</a> <a href="#">Entrez Gene 149420 Human</a> <a href="#">Q8N165</a>
<b>Synonyms:</b>	CLIK1L; STK35L2
<b>Protein Families:</b>	Druggable Genome, Protein Kinase



[View online »](#)

**Product images:**

HEK293T cells were transfected with the pCMV6-ENTRY control (Left lane) or pCMV6-ENTRY PDIK1L ([RC205597], Right lane) cDNA for 48 hrs and lysed. Equivalent amounts of cell lysates (5 ug per lane) were separated by SDS-PAGE and immunoblotted with anti-PDIK1L (1:2000). Positive lysates [LY407293] (100ug) and [LC407293] (20ug) can be purchased separately from OriGene.