

## Product datasheet for **CF811091**

### Syntaxin 3 (STX3) Mouse Monoclonal Antibody [Clone ID: OTI5D10]

#### Product data:

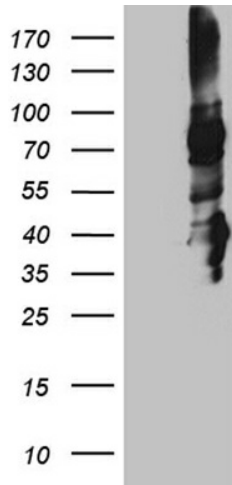
Product Type:	Primary Antibodies
Clone Name:	OTI5D10
Applications:	WB
Recommended Dilution:	WB 1:500~2000
Reactivity:	Human, Rat, Mouse
Host:	Mouse
Isotype:	IgG1
Clonality:	Monoclonal
Immunogen:	Full length human recombinant protein of human STX3 (NP_004168) produced in HEK293T cell.
Formulation:	Lyophilized powder (original buffer 1X PBS, pH 7.3, 8% trehalose)
Reconstitution Method:	For reconstitution, we recommend adding 100uL distilled water to a final antibody concentration of about 1 mg/mL. To use this carrier-free antibody for conjugation experiment, we strongly recommend performing another round of desalting process. (OriGene recommends Zeba Spin Desalting Columns, 7KMWCO from Thermo Scientific)
Purification:	Purified from mouse ascites fluids or tissue culture supernatant by affinity chromatography (protein A/G)
Conjugation:	Unconjugated
Storage:	Store at -20°C as received.
Stability:	Stable for 12 months from date of receipt.
Predicted Protein Size:	33 kDa
Gene Name:	syntaxin 3
Database Link:	<a href="#">NP_004168</a> <a href="#">Entrez Gene 20908 Mouse</a> <a href="#">Entrez Gene 81802 Rat</a> <a href="#">Entrez Gene 6809 Human</a> <a href="#">Q13277</a>
Synonyms:	STX3A
Protein Families:	Druggable Genome, Stem cell - Pluripotency, Transmembrane



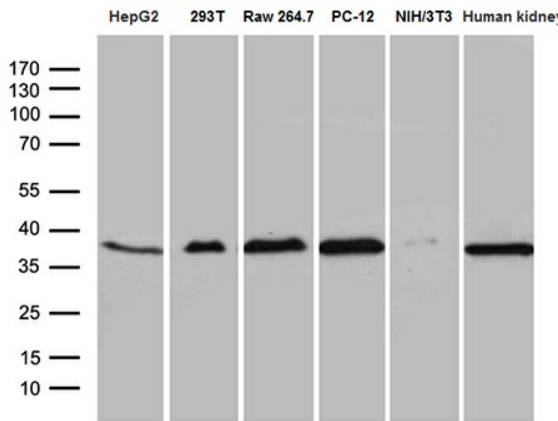
[View online »](#)

Protein Pathways: SNARE interactions in vesicular transport

**Product images:**



HEK293T cells were transfected with the pCMV6-ENTRY control (Left lane) or pCMV6-ENTRY STX3 ([RC200658], Right lane) cDNA for 48 hrs and lysed. Equivalent amounts of cell lysates (5 ug per lane) were separated by SDS-PAGE and immunoblotted with anti-STX3 (1:2000). Positive lysates [LY418166] (100ug) and [LC418166] (20ug) can be purchased separately from OriGene.



Western blot analysis of extracts (35ug) from 5 different cell lines and human kidney tissue lysate by using anti-STX3 monoclonal antibody (1:500).