

Product datasheet for **CF811082**

SPATA46 Mouse Monoclonal Antibody [Clone ID: OT11H3]

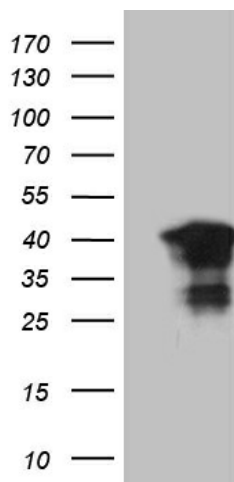
Product data:

Product Type:	Primary Antibodies
Clone Name:	OT11H3
Applications:	WB
Recommended Dilution:	WB 1:500~2000
Reactivity:	Human
Host:	Mouse
Isotype:	IgG1
Clonality:	Monoclonal
Immunogen:	Full length human recombinant protein of human C1ORF111 (NP_872387) produced in E.coli.
Formulation:	Lyophilized powder (original buffer 1X PBS, pH 7.3, 8% trehalose)
Reconstitution Method:	For reconstitution, we recommend adding 100uL distilled water to a final antibody concentration of about 1 mg/mL. To use this carrier-free antibody for conjugation experiment, we strongly recommend performing another round of desalting process. (OriGene recommends Zeba Spin Desalting Columns, 7KMWCO from Thermo Scientific)
Purification:	Purified from mouse ascites fluids or tissue culture supernatant by affinity chromatography (protein A/G)
Conjugation:	Unconjugated
Storage:	Store at -20°C as received.
Stability:	Stable for 12 months from date of receipt.
Predicted Protein Size:	29 kDa
Gene Name:	spermatogenesis associated 46
Database Link:	NP_872387 Entrez Gene 284680 Human Q5T0L3
Synonyms:	HSD20

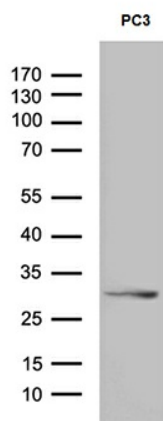


[View online »](#)

Product images:



HEK293T cells were transfected with the pCMV6-ENTRY control (Left lane) or pCMV6-ENTRY C1orf111 ([RC206227], Right lane) cDNA for 48 hrs and lysed. Equivalent amounts of cell lysates (5 ug per lane) were separated by SDS-PAGE and immunoblotted with anti-C1orf111 (1:2000). Positive lysates [LY405470] (100ug) and [LC405470] (20ug) can be purchased separately from OriGene.



Western blot analysis of extracts (35ug) from PC3 cell line by using anti-C1orf111 monoclonal antibody (1:500).