

Product datasheet for **CF811075**

Syntaxin 3 (STX3) Mouse Monoclonal Antibody [Clone ID: OTI5B12]

Product data:

Product Type:	Primary Antibodies
Clone Name:	OTI5B12
Applications:	WB
Recommended Dilution:	WB 1:500~2000
Reactivity:	Human, Rat, Mouse
Host:	Mouse
Isotype:	IgG1
Clonality:	Monoclonal
Immunogen:	Full length human recombinant protein of human STX3 (NP_004168) produced in HEK293T cell.
Formulation:	Lyophilized powder (original buffer 1X PBS, pH 7.3, 8% trehalose)
Reconstitution Method:	For reconstitution, we recommend adding 100uL distilled water to a final antibody concentration of about 1 mg/mL. To use this carrier-free antibody for conjugation experiment, we strongly recommend performing another round of desalting process. (OriGene recommends Zeba Spin Desalting Columns, 7KMWCO from Thermo Scientific)
Purification:	Purified from mouse ascites fluids or tissue culture supernatant by affinity chromatography (protein A/G)
Conjugation:	Unconjugated
Storage:	Store at -20°C as received.
Stability:	Stable for 12 months from date of receipt.
Predicted Protein Size:	33 kDa
Gene Name:	syntaxin 3
Database Link:	NP_004168 Entrez Gene 20908 Mouse Entrez Gene 81802 Rat Entrez Gene 6809 Human Q13277



[View online »](#)

Background:

The gene is a member of the syntaxin family. The encoded protein is targeted to the apical membrane of epithelial cells where it forms clusters and is important in establishing and maintaining polarity necessary for protein trafficking involving vesicle fusion and exocytosis. Alternative splicing results in multiple transcript variants. [provided by RefSeq, May 2010]

Synonyms:

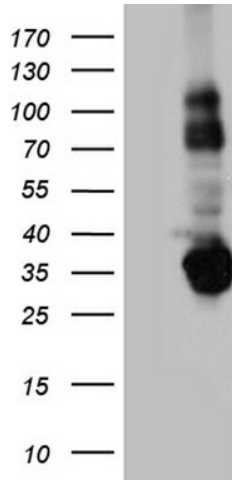
STX3A

Protein Families:

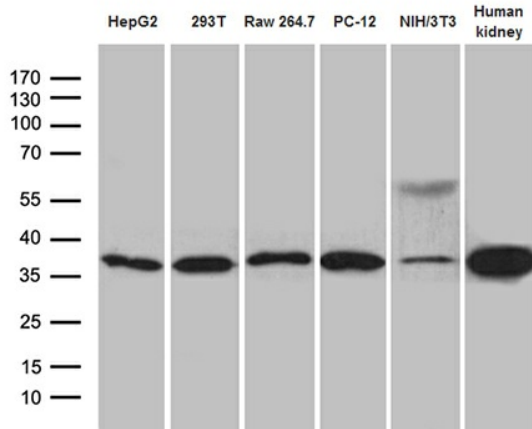
Druggable Genome, Stem cell - Pluripotency, Transmembrane

Protein Pathways:

SNARE interactions in vesicular transport

Product images:


HEK293T cells were transfected with the pCMV6-ENTRY control (Left lane) or pCMV6-ENTRY STX3 ([RC200658], Right lane) cDNA for 48 hrs and lysed. Equivalent amounts of cell lysates (5 ug per lane) were separated by SDS-PAGE and immunoblotted with anti-STX3. Positive lysates [LY418166] (100ug) and [LC418166] (20ug) can be purchased separately from OriGene.



Western blot analysis of extracts (35ug) from 5 cell lines and human kidney tissue lysate by using anti-STX3 monoclonal antibody (1:500).