

## Product datasheet for **CF811055**

### Sumo 1 (SUMO1) Mouse Monoclonal Antibody [Clone ID: OT1E8]

#### Product data:

Product Type:	Primary Antibodies
Clone Name:	OT1E8
Applications:	WB
Recommended Dilution:	WB 1:500
Reactivity:	Human, Mouse, Rat
Host:	Mouse
Isotype:	IgG1
Clonality:	Monoclonal
Immunogen:	Full length human recombinant protein of human SUMO1 (NP_001005781) produced in E.coli.
Formulation:	Lyophilized powder (original buffer 1X PBS, pH 7.3, 8% trehalose)
Reconstitution Method:	For reconstitution, we recommend adding 100uL distilled water to a final antibody concentration of about 1 mg/mL. To use this carrier-free antibody for conjugation experiment, we strongly recommend performing another round of desalting process. (OriGene recommends Zeba Spin Desalting Columns, 7KMWCO from Thermo Scientific)
Purification:	Purified from mouse ascites fluids or tissue culture supernatant by affinity chromatography (protein A/G)
Conjugation:	Unconjugated
Storage:	Store at -20°C as received.
Stability:	Stable for 12 months from date of receipt.
Predicted Protein Size:	11.4 kDa
Gene Name:	small ubiquitin like modifier 1
Database Link:	<a href="#">NP_001005781</a> <a href="#">Entrez Gene 22218 Mouse</a> <a href="#">Entrez Gene 301442 Rat</a> <a href="#">Entrez Gene 7341 Human</a> <a href="#">P63165</a>



[View online »](#)

**Background:**

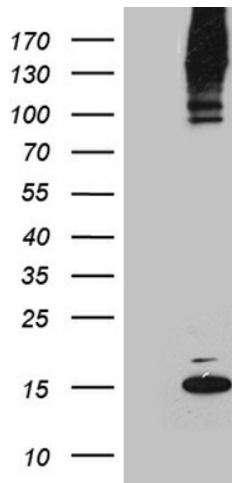
This gene encodes a protein that is a member of the SUMO (small ubiquitin-like modifier) protein family. It functions in a manner similar to ubiquitin in that it is bound to target proteins as part of a post-translational modification system. However, unlike ubiquitin which targets proteins for degradation, this protein is involved in a variety of cellular processes, such as nuclear transport, transcriptional regulation, apoptosis, and protein stability. It is not active until the last four amino acids of the carboxy-terminus have been cleaved off. Several pseudogenes have been reported for this gene. Alternate transcriptional splice variants encoding different isoforms have been characterized. [provided by RefSeq, Jul 2008]

**Synonyms:**

DAP1; GMP1; OFC10; PIC1; SENP2; SMT3; SMT3C; SMT3H3; UBL1

**Protein Families:**

Druggable Genome, Stem cell - Pluripotency, Transcription Factors

**Product images:**

HEK293T cells were transfected with the pCMV6-ENTRY control (Cat# [PS100001], Left lane) or pCMV6-ENTRY SUMO1 (Cat# [RC221677], Right lane) cDNA for 48 hrs and lysed. Equivalent amounts of cell lysates (5 ug per lane) were separated by SDS-PAGE and immunoblotted with anti-SUMO1 (Cat# [TA811055]). Positive lysates [LY423653] (100ug) and [LC423653] (20ug) can be purchased separately from OriGene.