

## Product datasheet for **CF811048**

### DUSP5 Mouse Monoclonal Antibody [Clone ID: OTI1D8]

#### Product data:

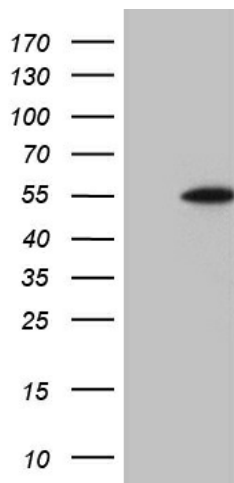
Product Type:	Primary Antibodies
Clone Name:	OTI1D8
Applications:	WB
Recommended Dilution:	WB 1:2000
Reactivity:	Human, Mouse, Rat
Host:	Mouse
Isotype:	IgG1
Clonality:	Monoclonal
Immunogen:	Human recombinant protein fragment corresponding to amino acids 125-384 of human DUSP5 (NP_004410) produced in E.coli.
Formulation:	Lyophilized powder (original buffer 1X PBS, pH 7.3, 8% trehalose)
Reconstitution Method:	For reconstitution, we recommend adding 100uL distilled water to a final antibody concentration of about 1 mg/mL. To use this carrier-free antibody for conjugation experiment, we strongly recommend performing another round of desalting process. (OriGene recommends Zeba Spin Desalting Columns, 7KMWCO from Thermo Scientific)
Purification:	Purified from mouse ascites fluids or tissue culture supernatant by affinity chromatography (protein A/G)
Conjugation:	Unconjugated
Storage:	Store at -20°C as received.
Stability:	Stable for 12 months from date of receipt.
Predicted Protein Size:	41.9 kDa
Gene Name:	dual specificity phosphatase 5
Database Link:	<a href="#">NP_004410</a> <a href="#">Entrez Gene 171109 RatEntrez Gene 240672 MouseEntrez Gene 1847 Human Q16690</a>
Synonyms:	DUSP; HVH3
Protein Families:	Phosphatase



[View online »](#)

Protein Pathways: MAPK signaling pathway

### Product images:



HEK293T cells were transfected with the pCMV6-ENTRY control (Left lane) or pCMV6-ENTRY DUSP5 ([RC209128], Right lane) cDNA for 48 hrs and lysed. Equivalent amounts of cell lysates (5 ug per lane) were separated by SDS-PAGE and immunoblotted with anti-DUSP5 (1:2000). Positive lysates [LY417998] (100ug) and [LC417998] (20ug) can be purchased separately from OriGene.