

## Product datasheet for **CF811032**

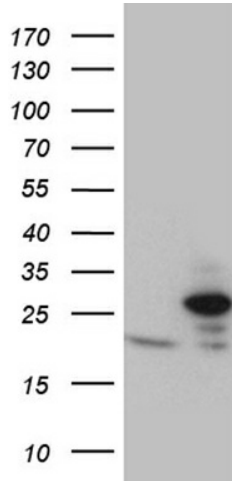
### TIMM23 Mouse Monoclonal Antibody [Clone ID: OTI2F5]

#### Product data:

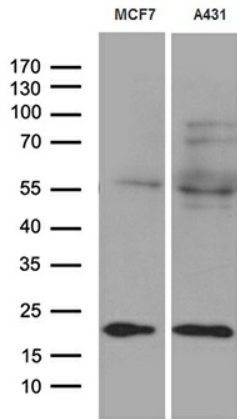
Product Type:	Primary Antibodies
Clone Name:	OTI2F5
Applications:	IHC, WB
Recommended Dilution:	WB 1:500~2000, IHC 1:2000
Reactivity:	Human, Mouse, Rat
Host:	Mouse
Isotype:	IgG2b
Clonality:	Monoclonal
Immunogen:	Full length human recombinant protein of human TIMM23 (NP_006318) produced in E.coli.
Formulation:	Lyophilized powder (original buffer 1X PBS, pH 7.3, 8% trehalose)
Reconstitution Method:	For reconstitution, we recommend adding 100uL distilled water to a final antibody concentration of about 1 mg/mL. To use this carrier-free antibody for conjugation experiment, we strongly recommend performing another round of desalting process. (OriGene recommends Zeba Spin Desalting Columns, 7KMWCO from Thermo Scientific)
Purification:	Purified from mouse ascites fluids or tissue culture supernatant by affinity chromatography (protein A/G)
Conjugation:	Unconjugated
Storage:	Store at -20°C as received.
Stability:	Stable for 12 months from date of receipt.
Predicted Protein Size:	21.8 kDa
Gene Name:	translocase of inner mitochondrial membrane 23
Database Link:	<a href="#">NP_006318</a> <a href="#">Entrez Gene 100287932 Human</a> <a href="#">O14925</a>
Synonyms:	TIM23



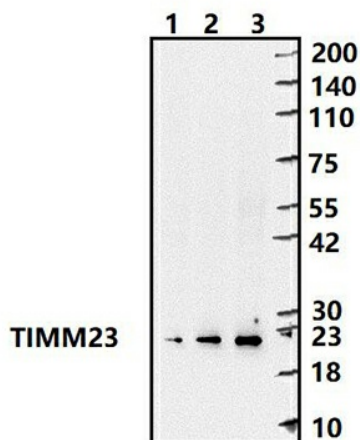
[View online »](#)

**Product images:**


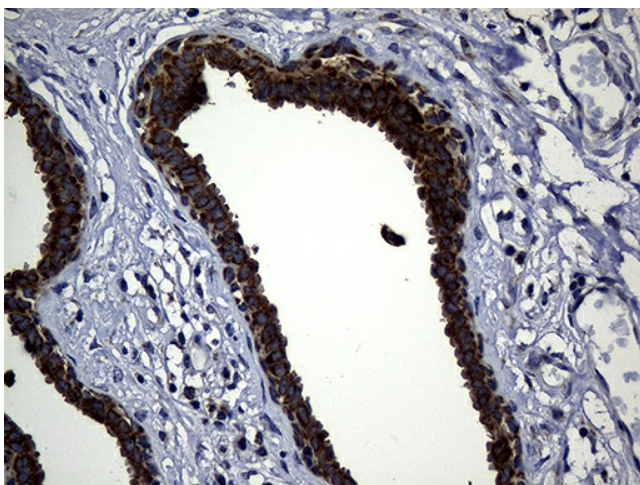
HEK293T cells were transfected with the pCMV6-ENTRY control (Cat# [PS100001], Left lane) or pCMV6-ENTRY TIMM23 (Cat# [RC209369], Right lane) cDNA for 48 hrs and lysed. Equivalent amounts of cell lysates (5 ug per lane) were separated by SDS-PAGE and immunoblotted with anti-TIMM23 (Cat# [TA811032])(1:2000). Positive lysates [LY401917] (100ug) and [LC401917] (20ug) can be purchased separately from OriGene.



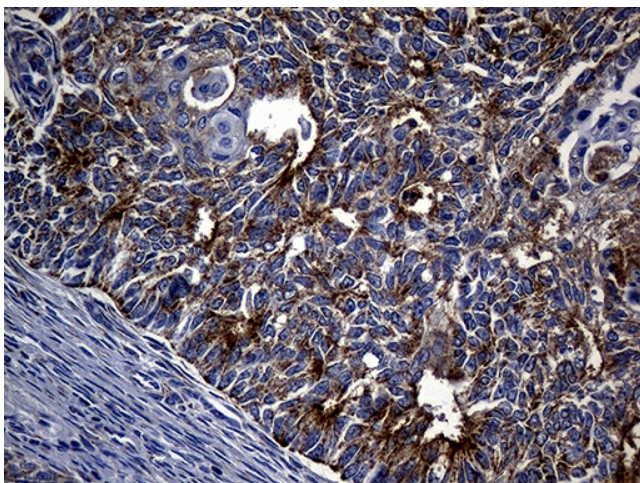
Western blot analysis of extracts (35ug) from 2 different cell lines by using anti-TIMM23 monoclonal antibody (1:500).



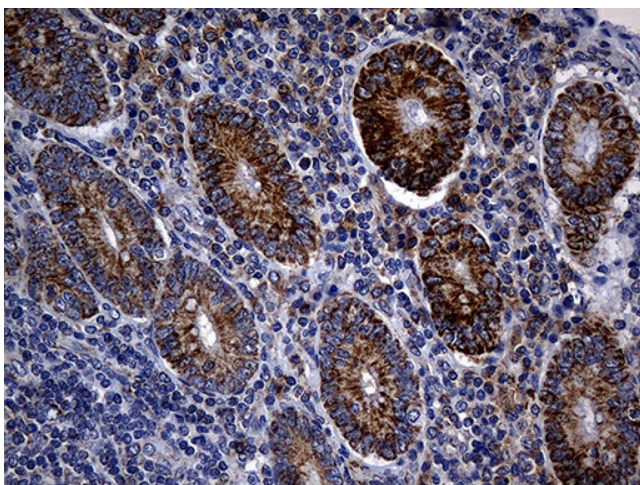
Western blot analysis of extracts (30ug per lane) from Jurkat lysate (lane 1), A431 lysate (lane 2) and Mouse liver lysate (lane 3) by using anti-TIMM23 monoclonal antibody ([TA811032], 1:500).



Immunohistochemical staining of paraffin-embedded Human breast tissue within the normal limits using anti-TIMM23 mouse monoclonal antibody. Heat-induced epitope retrieval by EDTA solution buffer pH 8.0 at 120°C for 3 min.



Immunohistochemical staining of paraffin-embedded Adenocarcinoma of Human endometrium tissue using anti-TIMM23 mouse monoclonal antibody. Heat-induced epitope retrieval by EDTA solution buffer pH 8.0 at 120°C for 3 min.



Immunohistochemical staining of paraffin-embedded Human appendix tissue within the normal limits using anti-TIMM23 mouse monoclonal antibody. Heat-induced epitope retrieval by EDTA solution buffer pH 8.0 at 120°C for 3 min.