

Product datasheet for **CF810969**

PCCA Mouse Monoclonal Antibody [Clone ID: OTI1B10]

Product data:

Product Type:	Primary Antibodies
Clone Name:	OTI1B10
Applications:	WB
Recommended Dilution:	WB 1:2000
Reactivity:	Human, Mouse, Rat
Host:	Mouse
Isotype:	IgG1
Clonality:	Monoclonal
Immunogen:	Full length human recombinant protein of human PCCA (NP_000273) produced in HEK293T cell.
Formulation:	Lyophilized powder (original buffer 1X PBS, pH 7.3, 8% trehalose)
Reconstitution Method:	For reconstitution, we recommend adding 100uL distilled water to a final antibody concentration of about 1 mg/mL. To use this carrier-free antibody for conjugation experiment, we strongly recommend performing another round of desalting process. (OriGene recommends Zeba Spin Desalting Columns, 7KMWCO from Thermo Scientific)
Purification:	Purified from mouse ascites fluids or tissue culture supernatant by affinity chromatography (protein A/G)
Conjugation:	Unconjugated
Storage:	Store at -20°C as received.
Stability:	Stable for 12 months from date of receipt.
Predicted Protein Size:	80.06 kDa
Gene Name:	propionyl-CoA carboxylase subunit alpha
Database Link:	NP_000273 Entrez Gene 110821 MouseEntrez Gene 687008 RatEntrez Gene 5095 Human P05165
Synonyms:	alpha polypeptide; mitochondrial; PCCase alpha subunit; propanoyl-CoA:carbon dioxide ligase alpha subunit; propionyl-CoA carboxylase alpha chain; propionyl-coenzyme A carboxylase; Propionyl Coenzyme A carboxylase alpha polypeptide

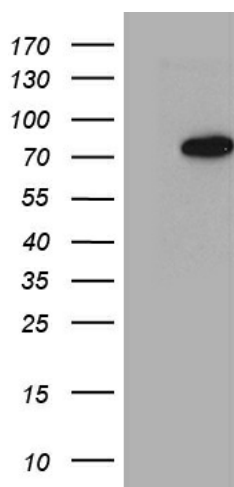


[View online »](#)

Protein Families: Druggable Genome

Protein Pathways: Metabolic pathways, Propanoate metabolism, Valine, leucine and isoleucine degradation

Product images:



HEK293T cells were transfected with the pCMV6-ENTRY control (Left lane) or pCMV6-ENTRY PCCA ([RC214832], Right lane) cDNA for 48 hrs and lysed. Equivalent amounts of cell lysates (5 ug per lane) were separated by SDS-PAGE and immunoblotted with anti-PCCA (1:2000). Positive lysates [LY400108] (100ug) and [LC400108] (20ug) can be purchased separately from OriGene.