

Product datasheet for **CF810965**

PTF1A Mouse Monoclonal Antibody [Clone ID: OT11H6]

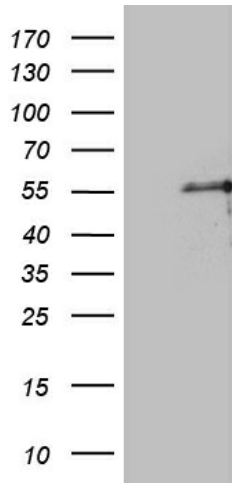
Product data:

Product Type:	Primary Antibodies
Clone Name:	OT11H6
Applications:	WB
Recommended Dilution:	WB 1:500~2000
Reactivity:	Human, Rat, Mouse
Host:	Mouse
Isotype:	IgG1
Clonality:	Monoclonal
Immunogen:	Full length human recombinant protein of human PTF1A (NP_835455) produced in E.coli.
Formulation:	Lyophilized powder (original buffer 1X PBS, pH 7.3, 8% trehalose)
Reconstitution Method:	For reconstitution, we recommend adding 100uL distilled water to a final antibody concentration of about 1 mg/mL. To use this carrier-free antibody for conjugation experiment, we strongly recommend performing another round of desalting process. (OriGene recommends Zeba Spin Desalting Columns, 7KMWCO from Thermo Scientific)
Purification:	Purified from mouse ascites fluids or tissue culture supernatant by affinity chromatography (protein A/G)
Conjugation:	Unconjugated
Storage:	Store at -20°C as received.
Stability:	Stable for 12 months from date of receipt.
Predicted Protein Size:	34.8 kDa
Gene Name:	pancreas associated transcription factor 1a
Database Link:	NP_835455 Entrez Gene 19213 MouseEntrez Gene 117034 RatEntrez Gene 256297 Human Q7RTS3
Synonyms:	bHLHa29; PACA; PAGEN2; PTF1-p48
Protein Families:	Embryonic stem cells, ES Cell Differentiation/IPS

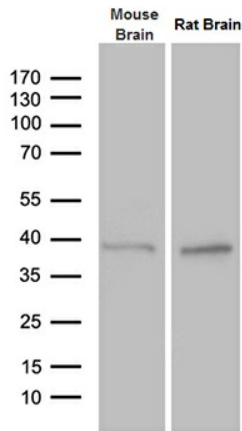


[View online »](#)

Product images:



HEK293T cells were transfected with the pCMV6-ENTRY control (Cat# [PS100001], Left lane) or pCMV6-ENTRY PTF1A (Cat# [RC221496], Right lane) cDNA for 48 hrs and lysed. Equivalent amounts of cell lysates (5 ug per lane) were separated by SDS-PAGE and immunoblotted with anti-PTF1A (Cat# [TA810965])(1:2000). Positive lysates [LY406006] (100ug) and [LC406006] (20ug) can be purchased separately from OriGene.



Western blot analysis of extracts (35ug) from mouse brain and rat brain tissue lysate by using anti-PTF1A monoclonal antibody (1:500).