

## Product datasheet for **CF810937**

### PHLDA1 Mouse Monoclonal Antibody [Clone ID: OTI4D9]

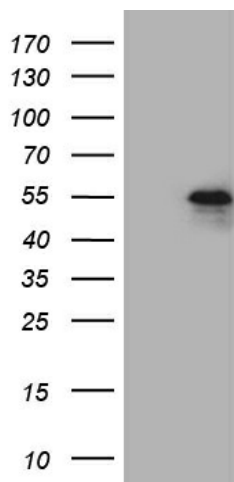
#### Product data:

Product Type:	Primary Antibodies
Clone Name:	OTI4D9
Applications:	WB
Recommended Dilution:	WB 1:500~2000
Reactivity:	Human, Rat
Host:	Mouse
Isotype:	IgG1
Clonality:	Monoclonal
Immunogen:	Human recombinant protein fragment corresponding to amino acids 183-401 of human PHLDA1 (NP_031376) produced in E.coli.
Formulation:	Lyophilized powder (original buffer 1X PBS, pH 7.3, 8% trehalose)
Reconstitution Method:	For reconstitution, we recommend adding 100uL distilled water to a final antibody concentration of about 1 mg/mL. To use this carrier-free antibody for conjugation experiment, we strongly recommend performing another round of desalting process. (OriGene recommends Zeba Spin Desalting Columns, 7KMWCO from Thermo Scientific)
Purification:	Purified from mouse ascites fluids or tissue culture supernatant by affinity chromatography (protein A/G)
Conjugation:	Unconjugated
Storage:	Store at -20°C as received.
Stability:	Stable for 12 months from date of receipt.
Predicted Protein Size:	44.8 kDa
Gene Name:	pleckstrin homology like domain family A member 1
Database Link:	<a href="#">NP_031376</a> <a href="#">Entrez Gene 29380 Rat</a> <a href="#">Entrez Gene 22822 Human</a> <a href="#">Q8WV24</a>
Synonyms:	DT1P1B11; PHRIP; TDAG51

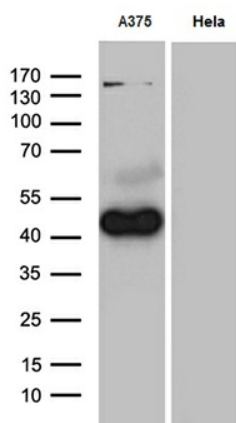


[View online »](#)

## Product images:



HEK293T cells were transfected with the pCMV6-ENTRY control (Cat# [PS100001], Left lane) or pCMV6-ENTRY PHLDA1 (Cat# [RC220155], Right lane) cDNA for 48 hrs and lysed. Equivalent amounts of cell lysates (5 ug per lane) were separated by SDS-PAGE and immunoblotted with anti-PHLDA1 (Cat# [TA810937])(1:2000). Positive lysates [LY402133] (100ug) and [LC402133] (20ug) can be purchased separately from OriGene.



Western blot analysis of extracts (35ug) from 2 different cell lines by using anti-PHLDA1 monoclonal antibody (1:500).