

Product datasheet for **CF810865**

MOK protein kinase (MOK) Mouse Monoclonal Antibody [Clone ID: OTI6C12]

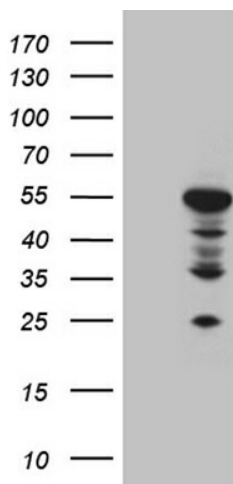
Product data:

Product Type:	Primary Antibodies
Clone Name:	OTI6C12
Applications:	IHC, WB
Recommended Dilution:	WB 1:500~2000, IHC 1:150
Reactivity:	Human, Mouse, Rat
Host:	Mouse
Isotype:	IgG1
Clonality:	Monoclonal
Immunogen:	Human recombinant protein fragment corresponding to amino acids 205-419 of human RAGE (NP_055041) produced in E.coli.
Formulation:	Lyophilized powder (original buffer 1X PBS, pH 7.3, 8% trehalose)
Reconstitution Method:	For reconstitution, we recommend adding 100uL distilled water to a final antibody concentration of about 1 mg/mL. To use this carrier-free antibody for conjugation experiment, we strongly recommend performing another round of desalting process. (OriGene recommends Zeba Spin Desalting Columns, 7KMWCO from Thermo Scientific)
Purification:	Purified from mouse ascites fluids or tissue culture supernatant by affinity chromatography (protein A/G)
Conjugation:	Unconjugated
Storage:	Store at -20°C as received.
Stability:	Stable for 12 months from date of receipt.
Predicted Protein Size:	47.8 kDa
Gene Name:	MOK protein kinase
Database Link:	NP_055041 Entrez Gene 26448 MouseEntrez Gene 362787 RatEntrez Gene 5891 Human Q9UQ07
Synonyms:	RAGE; RAGE-1; RAGE1; STK30
Protein Families:	Druggable Genome, Protein Kinase

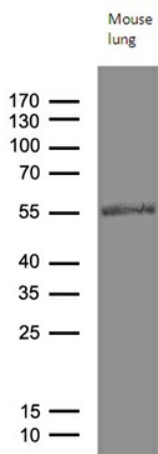


[View online »](#)

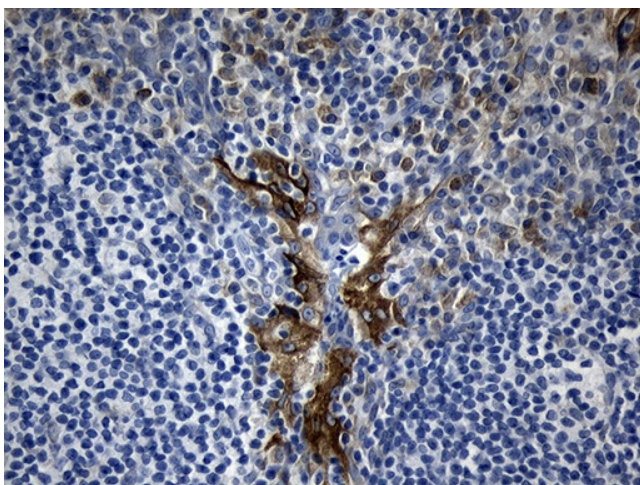
Product images:



HEK293T cells were transfected with the pCMV6-ENTRY control (Cat# [PS100001], Left lane) or pCMV6-ENTRY RAGE (Cat# [RC215365], Right lane) cDNA for 48 hrs and lysed. Equivalent amounts of cell lysates (5 ug per lane) were separated by SDS-PAGE and immunoblotted with anti-RAGE (Cat# [TA810865])(1:2000). Positive lysates [LY415417] (100ug) and [LC415417] (20ug) can be purchased separately from OriGene.



Western blot analysis of extracts (35ug) from mouse lung tissue lysate by using anti-RAGE monoclonal antibody (1:500).



Immunohistochemical staining of paraffin-embedded Human tonsil within the normal limits using anti-RAGE mouse monoclonal antibody. (Heat-induced epitope retrieval by 1mM EDTA in 10mM Tris buffer (pH8.5) at 120°C for 3min, [TA810865]) (1:150)