

## Product datasheet for **CF810860**

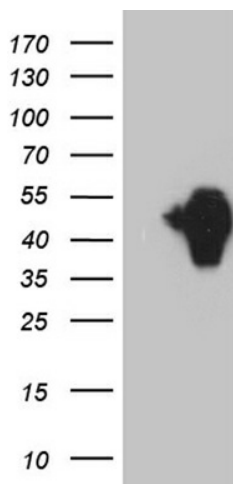
### TIS11B (ZFP36L1) Mouse Monoclonal Antibody [Clone ID: OTI4F8]

#### Product data:

Product Type:	Primary Antibodies
Clone Name:	OTI4F8
Applications:	WB
Recommended Dilution:	WB 1:2000
Reactivity:	Human, Mouse, Rat
Host:	Mouse
Isotype:	IgG2a
Clonality:	Monoclonal
Immunogen:	Human recombinant protein fragment corresponding to amino acids 171-320 of human ZFP36L1 (NP_004917) produced in E.coli.
Formulation:	Lyophilized powder (original buffer 1X PBS, pH 7.3, 8% trehalose)
Reconstitution Method:	For reconstitution, we recommend adding 100uL distilled water to a final antibody concentration of about 1 mg/mL. To use this carrier-free antibody for conjugation experiment, we strongly recommend performing another round of desalting process. (OriGene recommends Zeba Spin Desalting Columns, 7KMWCO from Thermo Scientific)
Purification:	Purified from mouse ascites fluids or tissue culture supernatant by affinity chromatography (protein A/G)
Conjugation:	Unconjugated
Storage:	Store at -20°C as received.
Stability:	Stable for 12 months from date of receipt.
Predicted Protein Size:	36.1 kDa
Gene Name:	ZFP36 ring finger protein like 1
Database Link:	<a href="#">NP_004917</a> <a href="#">Entrez Gene 12192 Mouse</a> <a href="#">Entrez Gene 29344 Rat</a> <a href="#">Entrez Gene 677 Human</a> <a href="#">Q07352</a>
Synonyms:	Berg36; BRF1; cMG1; ERF-1; ERF1; RNF162B; TIS11B
Protein Families:	Transcription Factors



[View online »](#)

**Product images:**

HEK293T cells were transfected with the pCMV6-ENTRY control (Cat# [PS100001], Left lane) or pCMV6-ENTRY ZFP36L1 (Cat# [RC202155], Right lane) cDNA for 48 hrs and lysed. Equivalent amounts of cell lysates (5 ug per lane) were separated by SDS-PAGE and immunoblotted with anti-ZFP36L1 (Cat# [TA810860])(1:2000). Positive lysates [LY417621] (100ug) and [LC417621] (20ug) can be purchased separately from OriGene.