

Product datasheet for **CF810855**

phospholipid scramblase 2 (PLSCR2) Mouse Monoclonal Antibody [Clone ID: OTI7A5]

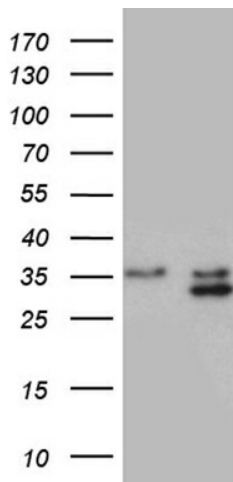
Product data:

Product Type:	Primary Antibodies
Clone Name:	OTI7A5
Applications:	WB
Recommended Dilution:	WB 1:500
Reactivity:	Human, Mouse
Host:	Mouse
Isotype:	IgG2b
Clonality:	Monoclonal
Immunogen:	Full length human recombinant protein of human PLSCR2 (NP_065092) produced in E.coli.
Formulation:	Lyophilized powder (original buffer 1X PBS, pH 7.3, 8% trehalose)
Reconstitution Method:	For reconstitution, we recommend adding 100uL distilled water to a final antibody concentration of about 1 mg/mL. To use this carrier-free antibody for conjugation experiment, we strongly recommend performing another round of desalting process. (OriGene recommends Zeba Spin Desalting Columns, 7KMWCO from Thermo Scientific)
Purification:	Purified from mouse ascites fluids or tissue culture supernatant by affinity chromatography (protein A/G)
Conjugation:	Unconjugated
Storage:	Store at -20°C as received.
Stability:	Stable for 12 months from date of receipt.
Predicted Protein Size:	25.3 kDa
Gene Name:	phospholipid scramblase 2
Database Link:	NP_065092 Entrez Gene 18828 Mouse Entrez Gene 57047 Human Q9NRY7
Synonyms:	phospholipid scramblase 2

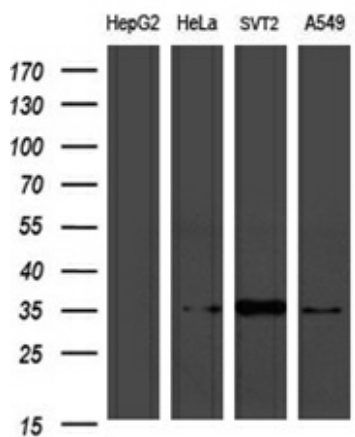


[View online »](#)

Product images:



HEK293T cells were transfected with the pCMV6-ENTRY control (Cat# [PS100001], Left lane) or pCMV6-ENTRY PLSCR2 (Cat# [RC214936], Right lane) cDNA for 48 hrs and lysed. Equivalent amounts of cell lysates (5 ug per lane) were separated by SDS-PAGE and immunoblotted with anti-PLSCR2 (Cat# [TA810855])(1:500). Positive lysates [LY412529] (100ug) and [LC412529] (20ug) can be purchased separately from OriGene.



Western blot analysis of extracts (35ug) from 4 different cell lines by using anti-PLSCR2 monoclonal antibody (1:500).