

Product datasheet for **CF810780**

POLR2H Mouse Monoclonal Antibody [Clone ID: OTI4A12]

Product data:

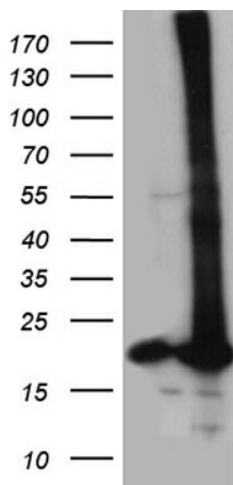
Product Type:	Primary Antibodies
Clone Name:	OTI4A12
Applications:	WB
Recommended Dilution:	WB 1:500~2000
Reactivity:	Human, Mouse, Rat
Host:	Mouse
Isotype:	IgG1
Clonality:	Monoclonal
Immunogen:	Human recombinant protein fragment corresponding to amino acids 2-150 of human POLR2H (NP_006223) produced in E.coli.
Formulation:	Lyophilized powder (original buffer 1X PBS, pH 7.3, 8% trehalose)
Reconstitution Method:	For reconstitution, we recommend adding 100uL distilled water to a final antibody concentration of about 1 mg/mL. To use this carrier-free antibody for conjugation experiment, we strongly recommend performing another round of desalting process. (OriGene recommends Zeba Spin Desalting Columns, 7KMWCO from Thermo Scientific)
Purification:	Purified from mouse ascites fluids or tissue culture supernatant by affinity chromatography (protein A/G)
Conjugation:	Unconjugated
Storage:	Store at -20°C as received.
Stability:	Stable for 12 months from date of receipt.
Predicted Protein Size:	17 kDa
Gene Name:	RNA polymerase II, I and III subunit H
Database Link:	NP_006223 Entrez Gene 245841 Mouse Entrez Gene 498109 Rat Entrez Gene 5437 Human P52434
Synonyms:	RPABC3; RPB8; RPB17
Protein Families:	Transcription Factors



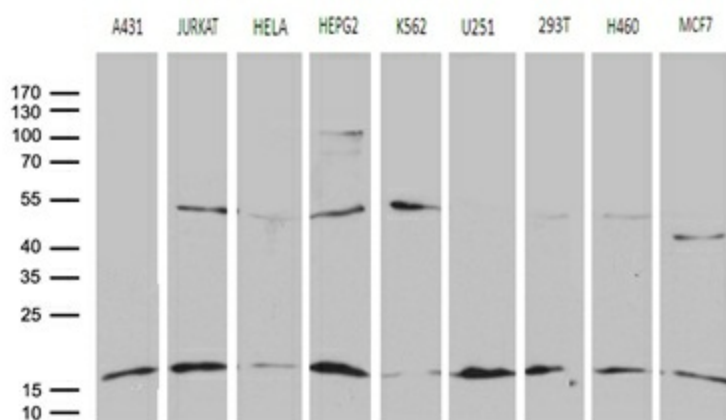
[View online »](#)

Protein Pathways: Huntington's disease, Metabolic pathways, Purine metabolism, Pyrimidine metabolism, RNA polymerase

Product images:



HEK293T cells were transfected with the pCMV6-ENTRY control (Left lane) or pCMV6-ENTRY POLR2H ([RC200650], Right lane) cDNA for 48 hrs and lysed. Equivalent amounts of cell lysates (5 ug per lane) were separated by SDS-PAGE and immunoblotted with anti-POLR2H (1:2000). Positive lysates [LY416788] (100ug) and [LC416788] (20ug) can be purchased separately from OriGene.



Western blot analysis of extracts (35ug) from 9 different cell lines by using anti-POLR2H monoclonal antibody (1:500).