

## Product datasheet for **CF810727**

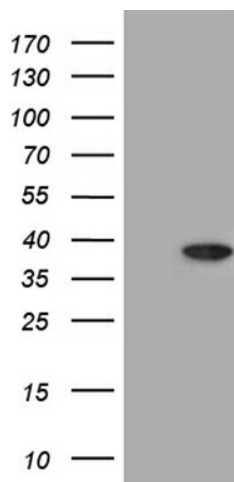
### CPLANE2 Mouse Monoclonal Antibody [Clone ID: OTI4H7]

#### Product data:

Product Type:	Primary Antibodies
Clone Name:	OTI4H7
Applications:	WB
Recommended Dilution:	WB 1:500
Reactivity:	Human
Host:	Mouse
Isotype:	IgG1
Clonality:	Monoclonal
Immunogen:	Full length human recombinant protein of human RSG1 (NP_112169) produced in E.coli.
Formulation:	Lyophilized powder (original buffer 1X PBS, pH 7.3, 8% trehalose)
Reconstitution Method:	For reconstitution, we recommend adding 100uL distilled water to a final antibody concentration of about 1 mg/mL. To use this carrier-free antibody for conjugation experiment, we strongly recommend performing another round of desalting process. (OriGene recommends Zeba Spin Desalting Columns, 7KMWCO from Thermo Scientific)
Purification:	Purified from mouse ascites fluids or tissue culture supernatant by affinity chromatography (protein A/G)
Conjugation:	Unconjugated
Storage:	Store at -20°C as received.
Stability:	Stable for 12 months from date of receipt.
Predicted Protein Size:	28.3 kDa
Gene Name:	ciliogenesis and planar polarity effector 2
Database Link:	<a href="#">NP_112169</a> <a href="#">Entrez Gene 79363 Human</a> <a href="#">Q9BU20</a>
Synonyms:	C1orf89



[View online »](#)

**Product images:**

HEK293T cells were transfected with the pCMV6-ENTRY control (Cat# [PS100001], Left lane) or pCMV6-ENTRY RSG1 (Cat# [RC202545], Right lane) cDNA for 48 hrs and lysed. Equivalent amounts of cell lysates (5 ug per lane) were separated by SDS-PAGE and immunoblotted with anti-RSG1 (Cat# [TA810727])(1:500). Positive lysates [LY410666] (100ug) and [LC410666] (20ug) can be purchased separately from OriGene.