

Product datasheet for **CF810724**

IL2 Mouse Monoclonal Antibody [Clone ID: OTI2C9]

Product data:

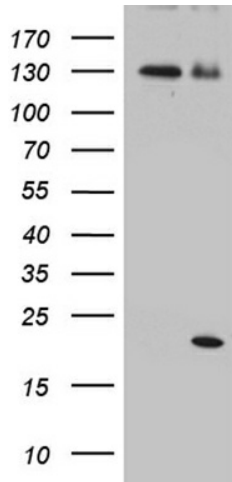
Product Type:	Primary Antibodies
Clone Name:	OTI2C9
Applications:	IHC, WB
Recommended Dilution:	WB 1:500, IHC 1:2000
Reactivity:	Human
Host:	Mouse
Isotype:	IgG2b
Clonality:	Monoclonal
Immunogen:	Human recombinant protein fragment corresponding to amino acids 21-153 of human IL2 (NP_000577) produced in E.coli.
Formulation:	Lyophilized powder (original buffer 1X PBS, pH 7.3, 8% trehalose)
Reconstitution Method:	For reconstitution, we recommend adding 100uL distilled water to a final antibody concentration of about 1 mg/mL. To use this carrier-free antibody for conjugation experiment, we strongly recommend performing another round of desalting process. (OriGene recommends Zeba Spin Desalting Columns, 7KMWCO from Thermo Scientific)
Purification:	Purified from mouse ascites fluids or tissue culture supernatant by affinity chromatography (protein A/G)
Conjugation:	Unconjugated
Storage:	Store at -20°C as received.
Stability:	Stable for 12 months from date of receipt.
Predicted Protein Size:	17.4 kDa
Gene Name:	interleukin 2
Database Link:	NP_000577 Entrez Gene 3558 Human P60568
Synonyms:	IL-2; lymphokine; TCGF
Protein Families:	Druggable Genome, Secreted Protein



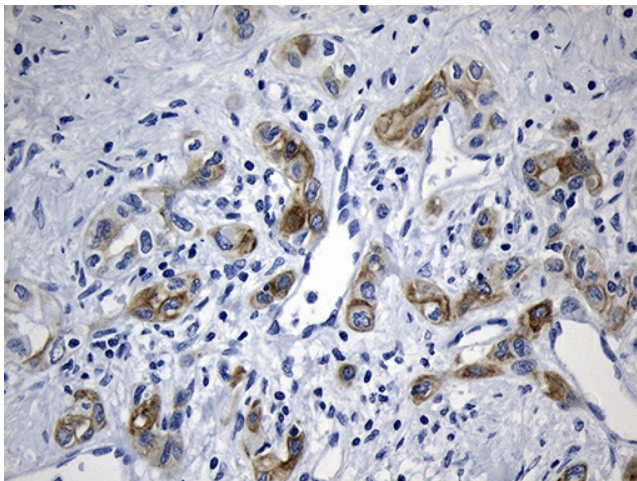
[View online »](#)

Protein Pathways:

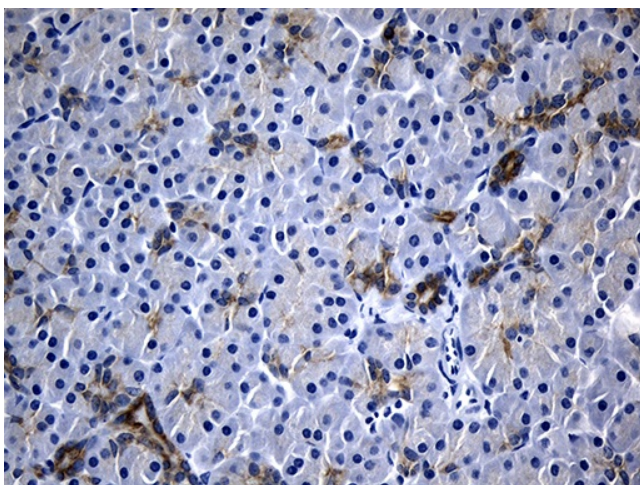
Allograft rejection, Autoimmune thyroid disease, Cytokine-cytokine receptor interaction, Graft-versus-host disease, Jak-STAT signaling pathway, T cell receptor signaling pathway, Type I diabetes mellitus

Product images:


HEK293T cells were transfected with the pCMV6-ENTRY control (Cat# [PS100001], Left lane) or pCMV6-ENTRY IL2 (Cat# [RC210013], Right lane) cDNA for 48 hrs and lysed. Equivalent amounts of cell lysates (5 ug per lane) were separated by SDS-PAGE and immunoblotted with anti-IL2 (Cat# [TA810724])(1:500). Positive lysates [LY424619] (100ug) and [LC424619] (20ug) can be purchased separately from OriGene.



Immunohistochemical staining of paraffin-embedded Carcinoma of Human liver tissue using anti-IL2 mouse monoclonal antibody. (Heat-induced epitope retrieval by 1mM EDTA in 10mM Tris buffer (pH8.5) at 120°C for 3min, [TA810724] (1:2000)



Immunohistochemical staining of paraffin-embedded Human pancreas tissue within the normal limits using anti-IL2 mouse monoclonal antibody. (Heat-induced epitope retrieval by 1mM EDTA in 10mM Tris buffer (pH8.5) at 120°C for 3min, [TA810724]) (1:2000)