

## Product datasheet for **CF810701**

### LINC02145 Mouse Monoclonal Antibody [Clone ID: OTI8C7]

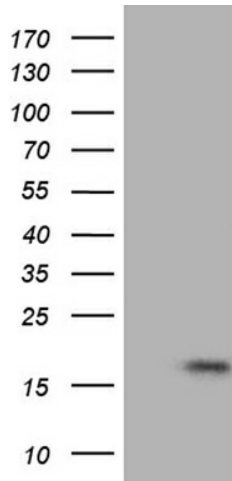
#### Product data:

Product Type:	Primary Antibodies
Clone Name:	OTI8C7
Applications:	WB
Recommended Dilution:	WB 1:500
Reactivity:	Human
Host:	Mouse
Isotype:	IgG2a
Clonality:	Monoclonal
Immunogen:	Full length human recombinant protein of human FLJ33360 (NP_001001702) produced in E.coli.
Formulation:	Lyophilized powder (original buffer 1X PBS, pH 7.3, 8% trehalose)
Reconstitution Method:	For reconstitution, we recommend adding 100uL distilled water to a final antibody concentration of about 1 mg/mL. To use this carrier-free antibody for conjugation experiment, we strongly recommend performing another round of desalting process. (OriGene recommends Zeba Spin Desalting Columns, 7KMWCO from Thermo Scientific)
Purification:	Purified from mouse ascites fluids or tissue culture supernatant by affinity chromatography (protein A/G)
Conjugation:	Unconjugated
Storage:	Store at -20°C as received.
Stability:	Stable for 12 months from date of receipt.
Predicted Protein Size:	14.2 kDa
Gene Name:	long intergenic non-protein coding RNA 2145
Database Link:	<a href="#">NP_001001702</a> <a href="#">Entrez Gene 401172 Human</a>

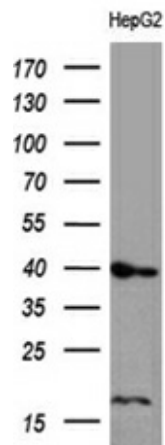


[View online »](#)

**Product images:**



HEK293T cells were transfected with the pCMV6-ENTRY control (Left lane) or pCMV6-ENTRY FLJ33360 ([RC213456], Right lane) cDNA for 48 hrs and lysed. Equivalent amounts of cell lysates (5 ug per lane) were separated by SDS-PAGE and immunoblotted with anti-FLJ33360 (1:500). Positive lysates [LY424212] (100ug) and [LC424212] (20ug) can be purchased separately from OriGene.



Western blot analysis of extracts (35ug) from hepg2 cell line by using anti-FLJ33360 monoclonal antibody (1:500).