

Product datasheet for **CF810689**

FOXO1 Mouse Monoclonal Antibody [Clone ID: OTI6E10]

Product data:

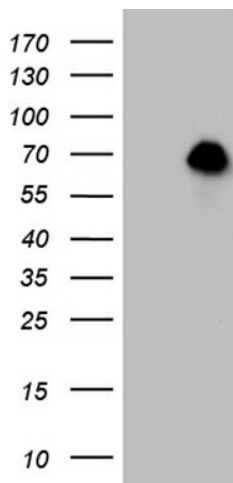
Product Type:	Primary Antibodies
Clone Name:	OTI6E10
Applications:	WB
Recommended Dilution:	WB 1:2000
Reactivity:	Human, Mouse, Rat
Host:	Mouse
Isotype:	IgG1
Clonality:	Monoclonal
Immunogen:	Human recombinant protein fragment corresponding to amino acids 356-655 of human FOXO1 (NP_002006) produced in E.coli.
Formulation:	Lyophilized powder (original buffer 1X PBS, pH 7.3, 8% trehalose)
Reconstitution Method:	For reconstitution, we recommend adding 100uL distilled water to a final antibody concentration of about 1 mg/mL. To use this carrier-free antibody for conjugation experiment, we strongly recommend performing another round of desalting process. (OriGene recommends Zeba Spin Desalting Columns, 7KMWCO from Thermo Scientific)
Purification:	Purified from mouse ascites fluids or tissue culture supernatant by affinity chromatography (protein A/G)
Conjugation:	Unconjugated
Storage:	Store at -20°C as received.
Stability:	Stable for 12 months from date of receipt.
Predicted Protein Size:	69.5 kDa
Gene Name:	forkhead box O1
Database Link:	NP_002006 Entrez Gene 56458 Mouse Entrez Gene 84482 Rat Entrez Gene 2308 Human Q12778
Synonyms:	FKH1; FKHR; FOXO1A
Protein Families:	Druggable Genome, Transcription Factors



[View online »](#)

Protein Pathways: Insulin signaling pathway, Pathways in cancer, Prostate cancer

Product images:



HEK293T cells were transfected with the pCMV6-ENTRY control (Left lane) or pCMV6-ENTRY FOXO1 ([RC200477], Right lane) cDNA for 48 hrs and lysed. Equivalent amounts of cell lysates (5 ug per lane) were separated by SDS-PAGE and immunoblotted with anti-FOXO1 (1:2000). Positive lysates [LY419586] (100ug) and [LC419586] (20ug) can be purchased separately from OriGene.