

## Product datasheet for **CF810585**

### PP4R4 (PPP4R4) Mouse Monoclonal Antibody [Clone ID: OTI1G7]

#### Product data:

Product Type:	Primary Antibodies
Clone Name:	OTI1G7
Applications:	IHC
Recommended Dilution:	IHC 1:500
Reactivity:	Human, Mouse, Rat
Host:	Mouse
Isotype:	IgG1
Clonality:	Monoclonal
Immunogen:	Full length human recombinant protein of human PPP4R4 (NP_066009) produced in E.coli.
Formulation:	Lyophilized powder (original buffer 1X PBS, pH 7.3, 8% trehalose)
Reconstitution Method:	For reconstitution, we recommend adding 100uL distilled water to a final antibody concentration of about 1 mg/mL. To use this carrier-free antibody for conjugation experiment, we strongly recommend performing another round of desalting process. (OriGene recommends Zeba Spin Desalting Columns, 7KMWCO from Thermo Scientific)
Purification:	Purified from mouse ascites fluids or tissue culture supernatant by affinity chromatography (protein A/G)
Conjugation:	Unconjugated
Storage:	Store at -20°C as received.
Stability:	Stable for 12 months from date of receipt.
Predicted Protein Size:	13.7 kDa
Gene Name:	protein phosphatase 4 regulatory subunit 4
Database Link:	<a href="#">NP_066009</a> <a href="#">Entrez Gene 57718 Human</a> <a href="#">Q6NUP7</a>



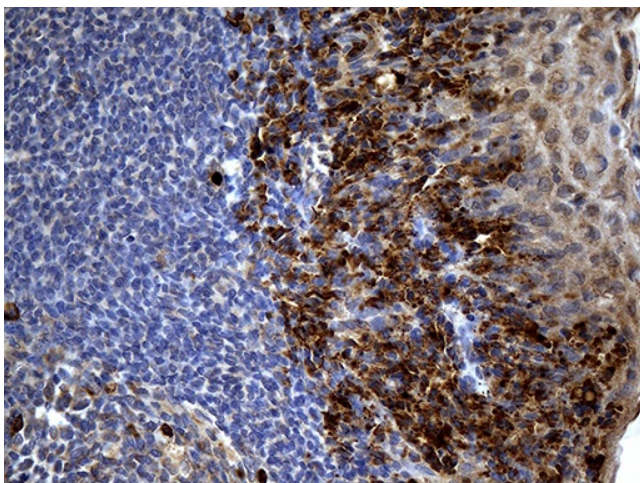
[View online »](#)

**Background:** The protein encoded by this gene is a HEAT-like repeat-containing protein. The HEAT repeat is a tandemly repeated, 37-47 amino acid long module occurring in a number of cytoplasmic proteins. Arrays of HEAT repeats form a rod-like helical structure and appear to function as protein-protein interaction surfaces. The repeat-containing region of this protein has some similarity to the constant regulatory domain of the protein phosphatase 2A PR65/A subunit. The function of this particular gene product has not been determined. Alternative splicing has been observed for this gene and two transcript variants encoding distinct isoforms have been identified. [provided by RefSeq, Jul 2008]

**Synonyms:** CFAP14; KIAA1622; PP4R4

**Protein Families:** Phosphatase

**Product images:**



Immunohistochemical staining of paraffin-embedded Human tonsil within the normal limits using anti-PPP4R4 mouse monoclonal antibody. (Heat-induced epitope retrieval by 1mM EDTA in 10mM Tris buffer (pH8.5) at 120°C for 3min, [TA810585]) (1:500)