

## Product datasheet for **CF810584**

### Calcineurin A (PPP3CA) Mouse Monoclonal Antibody [Clone ID: OTI5C6]

#### Product data:

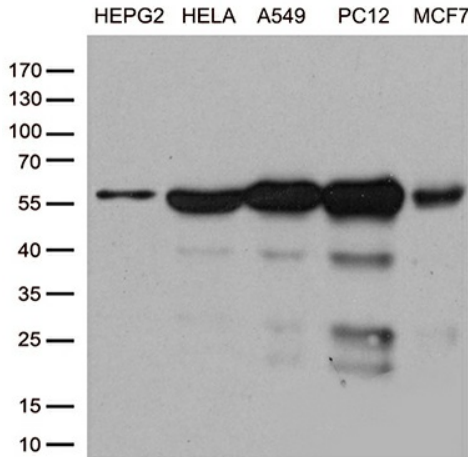
Product Type:	Primary Antibodies
Clone Name:	OTI5C6
Applications:	IHC, WB
Recommended Dilution:	WB 1:500, IHC 1:2000
Reactivity:	Human, Rat, Mouse
Host:	Mouse
Isotype:	IgG1
Clonality:	Monoclonal
Immunogen:	Human recombinant protein fragment corresponding to amino acids 2-105 of human PPP3CA (NP_000935) produced in E.coli.
Formulation:	Lyophilized powder (original buffer 1X PBS, pH 7.3, 8% trehalose)
Reconstitution Method:	For reconstitution, we recommend adding 100uL distilled water to a final antibody concentration of about 1 mg/mL. To use this carrier-free antibody for conjugation experiment, we strongly recommend performing another round of desalting process. (OriGene recommends Zeba Spin Desalting Columns, 7KMWCO from Thermo Scientific)
Purification:	Purified from mouse ascites fluids or tissue culture supernatant by affinity chromatography (protein A/G)
Conjugation:	Unconjugated
Storage:	Store at -20°C as received.
Stability:	Stable for 12 months from date of receipt.
Gene Name:	protein phosphatase 3 catalytic subunit alpha
Database Link:	<a href="#">NP_000935</a> <a href="#">Entrez Gene 19055 Mouse</a> <a href="#">Entrez Gene 24674 Rat</a> <a href="#">Entrez Gene 5530 Human</a> <a href="#">Q08209</a>
Synonyms:	ACCIID; CALN; CALNA; CALNA1; CCN1; CNA1; IECEE; IECEE1; PPP2B
Protein Families:	Druggable Genome, Phosphatase



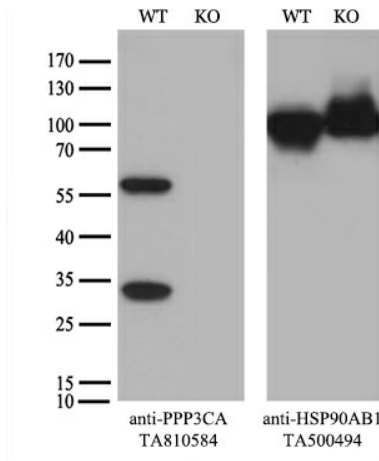
[View online »](#)

**Protein Pathways:**

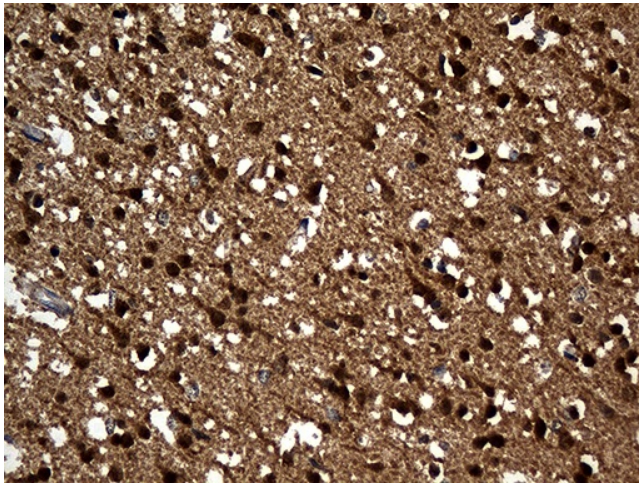
Alzheimer's disease, Amyotrophic lateral sclerosis (ALS), Apoptosis, Axon guidance, B cell receptor signaling pathway, Calcium signaling pathway, Long-term potentiation, MAPK signaling pathway, Natural killer cell mediated cytotoxicity, Oocyte meiosis, T cell receptor signaling pathway, VEGF signaling pathway, Wnt signaling pathway

**Product images:**


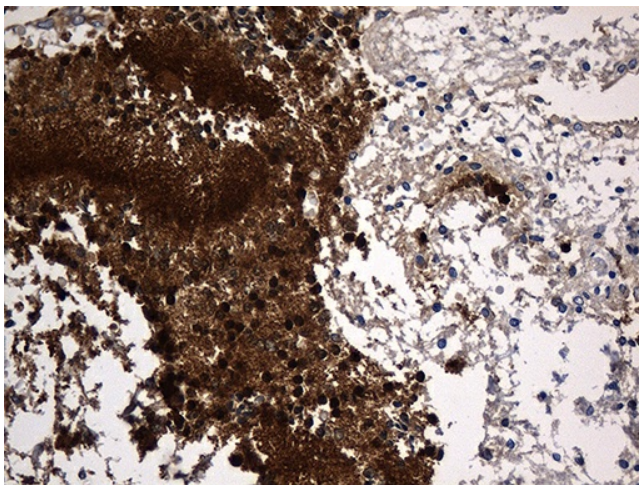
Western blot analysis of extracts (35ug) from cell lines by using anti-PPP3CA monoclonal antibody (1:500).



Equivalent amounts of cell lysates (10 ug per lane) of wild-type HeLa cells (WT, Cat# LC810HELA) and PPP3CA-Knockout HeLa cells (KO, Cat# [LC831038]) were separated by SDS-PAGE and immunoblotted with anti-PPP3CA monoclonal antibody [TA810584] (1:500). Then the blotted membrane was stripped and reprobed with anti-HSP90 antibody as a loading control.



Immunohistochemical staining of paraffin-embedded Human adult brain tissue within the normal limits using anti-PPP3CA mouse monoclonal antibody. (Heat-induced epitope retrieval by 1mM EDTA in 10mM Tris buffer (pH8.5) at 120°C for 3min, [TA810584]) (1:2000)



Immunohistochemical staining of paraffin-embedded Human embryonic cerebellum within the normal limits using anti-PPP3CA mouse monoclonal antibody. (Heat-induced epitope retrieval by 1mM EDTA in 10mM Tris buffer (pH8.5) at 120°C for 3min, [TA810584]) (1:2000)