

## Product datasheet for **CF810515**

### CD38 Mouse Monoclonal Antibody [Clone ID: OTI6B2]

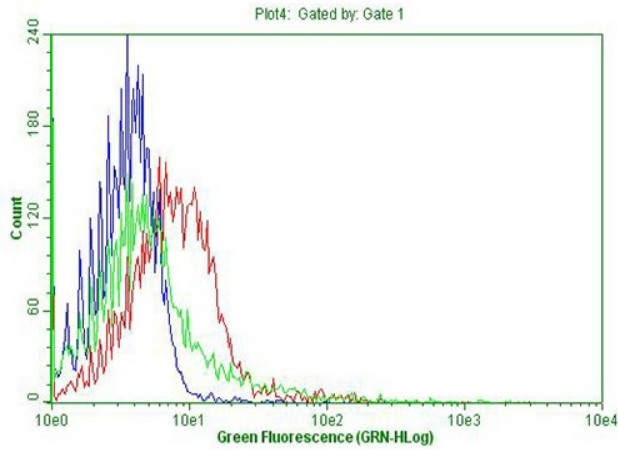
#### Product data:

Product Type:	Primary Antibodies
Clone Name:	OTI6B2
Applications:	FC
Recommended Dilution:	FLOW 1:50
Reactivity:	Rabbit
Host:	Mouse
Isotype:	IgG1
Clonality:	Monoclonal
Immunogen:	Recombinant rabbit CD38 protein (NP_001076152.1) produced in HEK293 cells.
Formulation:	Lyophilized powder (original buffer 1X PBS, pH 7.3, 8% trehalose)
Reconstitution Method:	For reconstitution, we recommend adding 100uL distilled water to a final antibody concentration of about 1 mg/mL. To use this carrier-free antibody for conjugation experiment, we strongly recommend performing another round of desalting process. (OriGene recommends Zeba Spin Desalting Columns, 7KMWCO from Thermo Scientific)
Purification:	Purified from mouse ascites fluids or tissue culture supernatant by affinity chromatography (protein A/G)
Conjugation:	Unconjugated
Storage:	Store at -20°C as received.
Stability:	Stable for 12 months from date of receipt.
Database Link:	<a href="#">NP_001076152</a> <a href="#">Entrez Gene 100009409 Rabbit</a>
Synonyms:	ADPRC 1

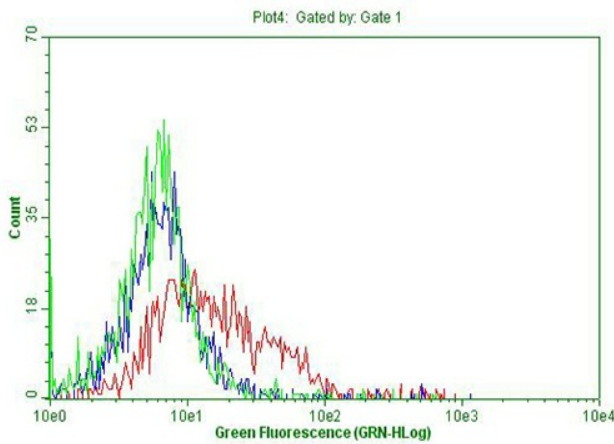


[View online »](#)

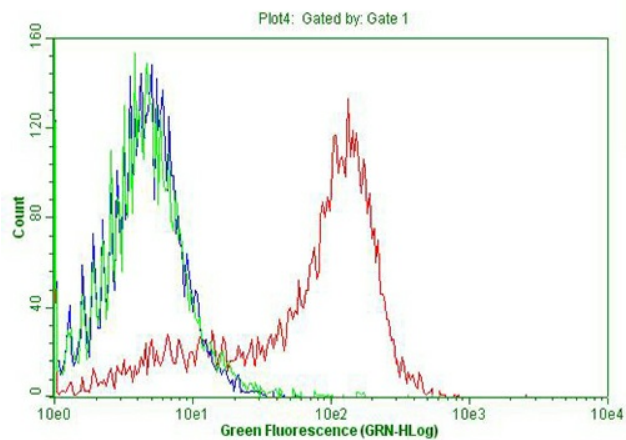
Product images:



Flow cytometric Analysis of living RBC-lysed rabbit peripheral blood cells, using anti-rabbit CD38 antibody ([TA810515]), (Red), compared to a nonspecific negative control antibody ([TA180144]), (green) and PBS, (blue). (1:100) (1:50)



Flow cytometric Analysis of living rabbit bone marrow cells, using anti-rabbit CD38 antibody ([TA810515]), (Red), compared to a nonspecific negative control antibody ([TA180144]), (green) and PBS, (blue) (1:50).



Flow cytometric Analysis of living rabbit spleen cells, using anti-rabbit CD38 antibody ([TA810515]), (Red), compared to a nonspecific negative control antibody ([TA180144]), (green) and PBS, (blue) (1:50).