

## Product datasheet for **CF810394**

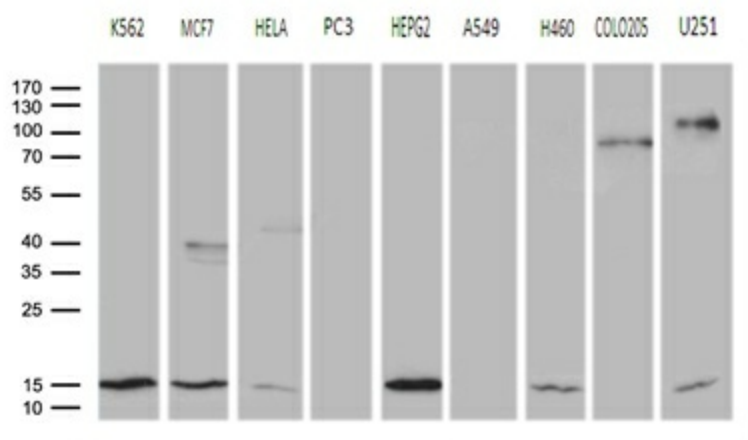
### CISD2 Mouse Monoclonal Antibody [Clone ID: OTI4D12]

#### Product data:

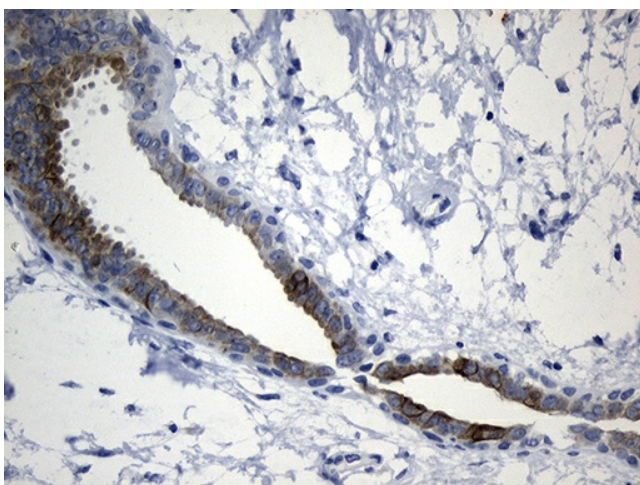
|                        |  |
|------------------------|--|
| Product Type:          | Primary Antibodies   |
| Clone Name:            | OTI4D12  |
| Applications:          | IHC, WB  |
| Recommended Dilution:  | WB 1:500, IHC 1:500  |
| Reactivity:            | Human, Mouse, Rat  |
| Host:                  | Mouse  |
| Isotype:               | IgG1   |
| Clonality:             | Monoclonal   |
| Immunogen:             | Full length human recombinant protein of human CISD2 (NP_001008389) produced in E.coli.  |
| Formulation:           | Lyophilized powder (original buffer 1X PBS, pH 7.3, 8% trehalose)  |
| Reconstitution Method: | For reconstitution, we recommend adding 100uL distilled water to a final antibody concentration of about 1 mg/mL. To use this carrier-free antibody for conjugation experiment, we strongly recommend performing another round of desalting process. (OriGene recommends Zeba Spin Desalting Columns, 7KMWCO from Thermo Scientific) |
| Purification:          | Purified from mouse ascites fluids or tissue culture supernatant by affinity chromatography (protein A/G)  |
| Conjugation:           | Unconjugated   |
| Storage:               | Store at -20°C as received.  |
| Stability:             | Stable for 12 months from date of receipt.   |
| Gene Name:             | CDGSH iron sulfur domain 2   |
| Database Link:         | <a href="#">NP_001008389</a><br><a href="#">Entrez Gene 67006 Mouse</a> <a href="#">Entrez Gene 295457 Rat</a> <a href="#">Entrez Gene 493856 Human</a><br><a href="#">Q8N5K1</a>  |
| Synonyms:              | ERIS; Miner1; NAF-1; WFS2; ZCD2  |
| Protein Families:      | Transmembrane  |



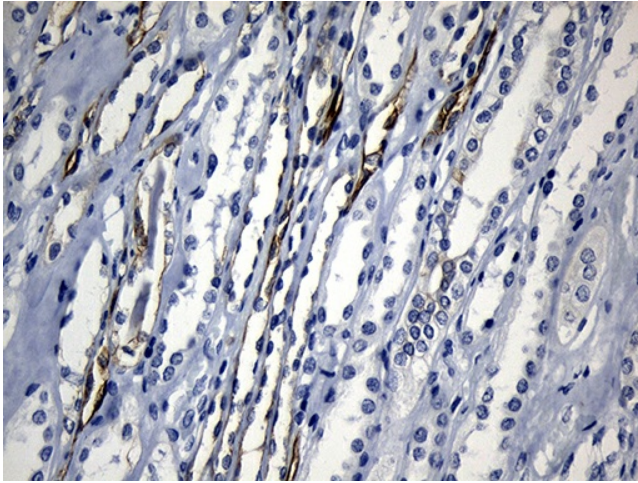
[View online »](#)

**Product images:**

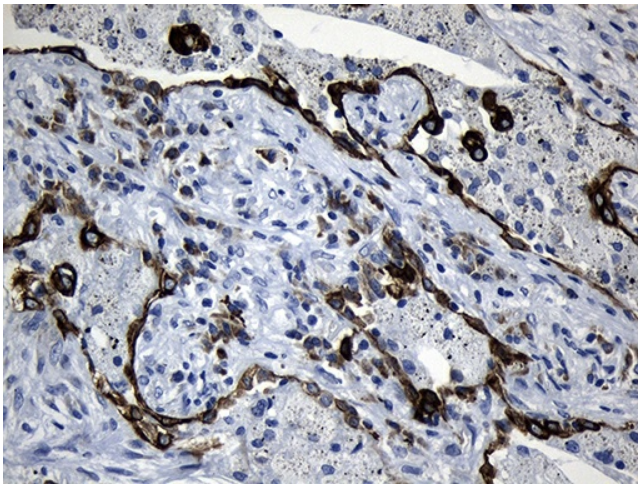
Western blot analysis of extracts (35ug) from 9 different cell lines by using anti-CISD2 monoclonal antibody (1:500).



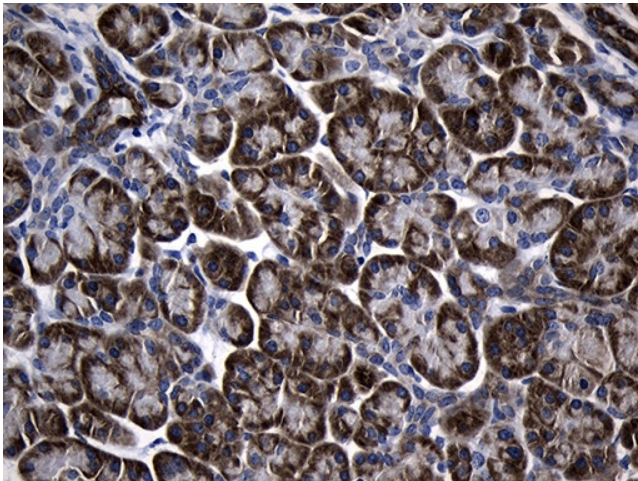
Immunohistochemical staining of paraffin-embedded Human breast tissue within the normal limits using anti-CISD2 mouse monoclonal antibody. (Heat-induced epitope retrieval by 1mM EDTA in 10mM Tris buffer (pH8.5) at 120°C for 3min, [TA810394]) (1:500)



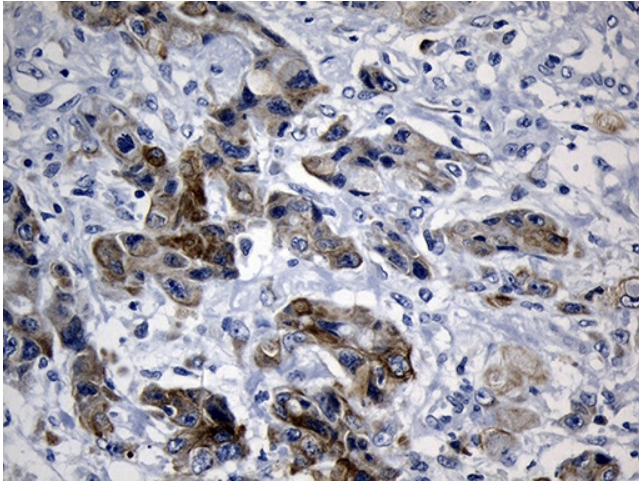
Immunohistochemical staining of paraffin-embedded Human Kidney tissue within the normal limits using anti-CISD2 mouse monoclonal antibody. (Heat-induced epitope retrieval by 1mM EDTA in 10mM Tris buffer (pH8.5) at 120°C for 3min, [TA810394]) (1:500)



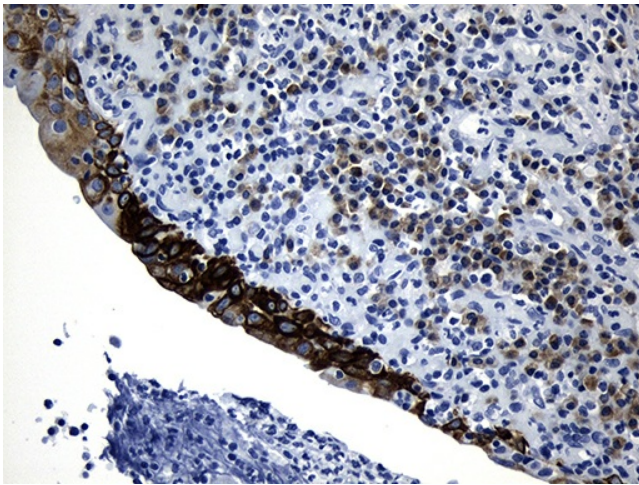
Immunohistochemical staining of paraffin-embedded Carcinoma of Human lung tissue using anti-CISD2 mouse monoclonal antibody. (Heat-induced epitope retrieval by 1mM EDTA in 10mM Tris buffer (pH8.5) at 120°C for 3min, [TA810394]) (1:500)



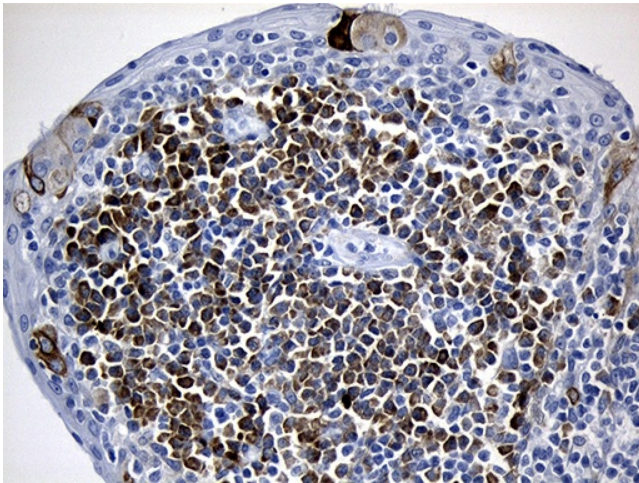
Immunohistochemical staining of paraffin-embedded Human pancreas tissue within the normal limits using anti-CISD2 mouse monoclonal antibody. (Heat-induced epitope retrieval by 1mM EDTA in 10mM Tris buffer (pH8.5) at 120°C for 3min, [TA810394]) (1:500)



Immunohistochemical staining of paraffin-embedded Carcinoma of Human pancreas tissue using anti-CISD2 mouse monoclonal antibody. (Heat-induced epitope retrieval by 1mM EDTA in 10mM Tris buffer (pH8.5) at 120°C for 3min, [TA810394]) (1:500)



Immunohistochemical staining of paraffin-embedded Human lymph node tissue within the normal limits using anti-CISD2 mouse monoclonal antibody. (Heat-induced epitope retrieval by 1mM EDTA in 10mM Tris buffer (pH8.5) at 120°C for 3min, [TA810394]) (1:500)



Immunohistochemical staining of paraffin-embedded Human tonsil within the normal limits using anti-CISD2 mouse monoclonal antibody. (Heat-induced epitope retrieval by 1mM EDTA in 10mM Tris buffer (pH8.5) at 120°C for 3min, [TA810394]) (1:500)