

Product datasheet for **CF810388**

PKN beta (PKN3) Mouse Monoclonal Antibody [Clone ID: OTI11D8]

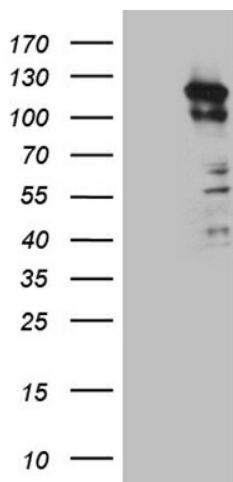
Product data:

Product Type:	Primary Antibodies
Clone Name:	OTI11D8
Applications:	WB
Recommended Dilution:	WB 1:500~2000
Reactivity:	Human
Host:	Mouse
Isotype:	IgG1
Clonality:	Monoclonal
Immunogen:	Human recombinant protein fragment corresponding to amino acids 1-275 of human PKN3 (NP_037487) produced in E.coli.
Formulation:	Lyophilized powder (original buffer 1X PBS, pH 7.3, 8% trehalose)
Reconstitution Method:	For reconstitution, we recommend adding 100uL distilled water to a final antibody concentration of about 1 mg/mL. To use this carrier-free antibody for conjugation experiment, we strongly recommend performing another round of desalting process. (OriGene recommends Zeba Spin Desalting Columns, 7KMWCO from Thermo Scientific)
Purification:	Purified from mouse ascites fluids or tissue culture supernatant by affinity chromatography (protein A/G)
Conjugation:	Unconjugated
Storage:	Store at -20°C as received.
Stability:	Stable for 12 months from date of receipt.
Predicted Protein Size:	99.2 kDa
Gene Name:	protein kinase N3
Database Link:	NP_037487 Entrez Gene 29941 Human Q6P5Z2
Synonyms:	UTDP4-1
Protein Families:	Druggable Genome, Protein Kinase

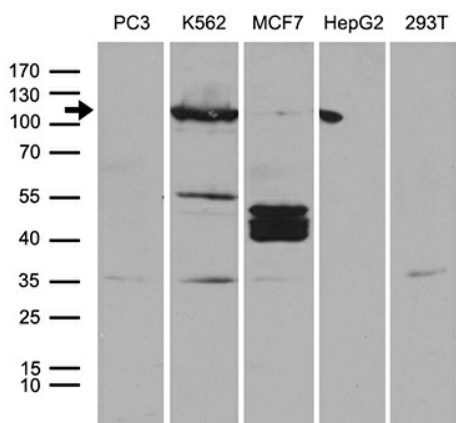


[View online »](#)

Product images:



HEK293T cells were transfected with the pCMV6-ENTRY control (Cat# [PS100001], Left lane) or pCMV6-ENTRY PKN3 (Cat# [RC209134], Right lane) cDNA for 48 hrs and lysed. Equivalent amounts of cell lysates (5 ug per lane) were separated by SDS-PAGE and immunoblotted with anti-PKN3 (Cat# [TA810388])(1:2000). Positive lysates [LY415658] (100ug) and [LC415658] (20ug) can be purchased separately from OriGene.



Western blot analysis of extracts (35ug) from 5 different cell lines by using anti-PKN3 monoclonal antibody (1:500).