

Product datasheet for **CF810384**

Metabotropic Glutamate Receptor 4 (GRM4) Mouse Monoclonal Antibody [Clone ID: OTI6D1]

Product data:

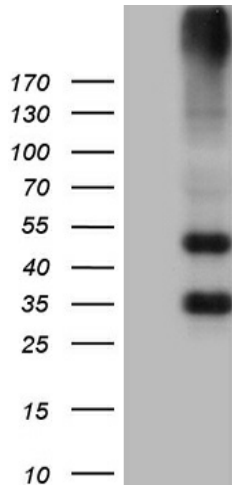
Product Type:	Primary Antibodies
Clone Name:	OTI6D1
Applications:	IHC, WB
Recommended Dilution:	WB 1:2000, IHC 1:500
Reactivity:	Human, Mouse, Rat
Host:	Mouse
Isotype:	IgG2a
Clonality:	Monoclonal
Immunogen:	Human recombinant protein fragment corresponding to amino acids 126-407 of human GRM4 (NP_000832) produced in E.coli.
Formulation:	Lyophilized powder (original buffer 1X PBS, pH 7.3, 8% trehalose)
Reconstitution Method:	For reconstitution, we recommend adding 100uL distilled water to a final antibody concentration of about 1 mg/mL. To use this carrier-free antibody for conjugation experiment, we strongly recommend performing another round of desalting process. (OriGene recommends Zeba Spin Desalting Columns, 7KMWCO from Thermo Scientific)
Purification:	Purified from mouse ascites fluids or tissue culture supernatant by affinity chromatography (protein A/G)
Conjugation:	Unconjugated
Storage:	Store at -20°C as received.
Stability:	Stable for 12 months from date of receipt.
Predicted Protein Size:	101.87 kDa
Gene Name:	glutamate metabotropic receptor 4
Database Link:	NP_000832 Entrez Gene 24417 Rat Entrez Gene 268934 Mouse Entrez Gene 2914 Human Q14833
Synonyms:	GPRC1D; mGlu4; MGLUR4
Protein Families:	Druggable Genome, GPCR, Transmembrane



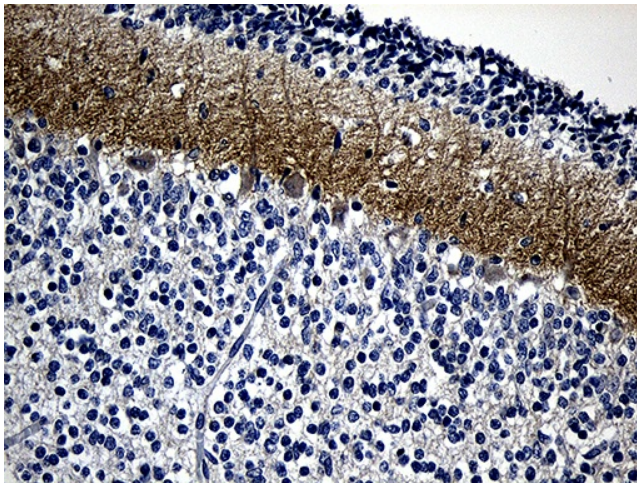
[View online »](#)

Protein Pathways: Neuroactive ligand-receptor interaction, Taste transduction

Product images:



HEK293T cells were transfected with the pCMV6-ENTRY control (Cat# [PS100001], Left lane) or pCMV6-ENTRY GRM4 (Cat# [RC223673], Right lane) cDNA for 48 hrs and lysed. Equivalent amounts of cell lysates (5 ug per lane) were separated by SDS-PAGE and immunoblotted with anti-GRM4 (Cat# [TA810384])(1:2000). Positive lysates [LY400298] (100ug) and [LC400298] (20ug) can be purchased separately from OriGene.



Immunohistochemical staining of paraffin-embedded Human embryonic cerebellum within the normal limits using anti-GRM4 mouse monoclonal antibody. (Heat-induced epitope retrieval by 1mM EDTA in 10mM Tris buffer (pH8.5) at 120°C for 3min, [TA810384]) (1:500)