

Product datasheet for **CF810367**

SMUG1 Mouse Monoclonal Antibody [Clone ID: OTI6B3]

Product data:

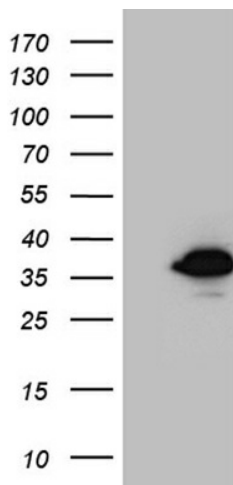
Product Type:	Primary Antibodies
Clone Name:	OTI6B3
Applications:	WB
Recommended Dilution:	WB 1:500~2000
Reactivity:	Human, Mouse, Rat
Host:	Mouse
Isotype:	IgG2a
Clonality:	Monoclonal
Immunogen:	Full length human recombinant protein of human SMUG1 (NP_055126) produced in HEK293T cell.
Formulation:	Lyophilized powder (original buffer 1X PBS, pH 7.3, 8% trehalose)
Reconstitution Method:	For reconstitution, we recommend adding 100uL distilled water to a final antibody concentration of about 1 mg/mL. To use this carrier-free antibody for conjugation experiment, we strongly recommend performing another round of desalting process. (OriGene recommends Zeba Spin Desalting Columns, 7KMWCO from Thermo Scientific)
Purification:	Purified from mouse ascites fluids or tissue culture supernatant by affinity chromatography (protein A/G)
Conjugation:	Unconjugated
Storage:	Store at -20°C as received.
Stability:	Stable for 12 months from date of receipt.
Predicted Protein Size:	29.7 kDa
Gene Name:	single-strand-selective monofunctional uracil-DNA glycosylase 1
Database Link:	NP_055126 Entrez Gene 71726 Mouse Entrez Gene 315344 Rat Entrez Gene 23583 Human Q53HV7
Synonyms:	FDG; HMUDG; UNG3
Protein Families:	Druggable Genome



[View online »](#)

Protein Pathways: Base excision repair

Product images:



HEK293T cells were transfected with the pCMV6-ENTRY control (Left lane) or pCMV6-ENTRY SMUG1 ([RC212141], Right lane) cDNA for 48 hrs and lysed. Equivalent amounts of cell lysates (5 ug per lane) were separated by SDS-PAGE and immunoblotted with anti-SMUG1 (1:2000). Positive lysates [LY415367] (100ug) and [LC415367] (20ug) can be purchased separately from OriGene.