

Product datasheet for **CF810344**

PSMA7 Mouse Monoclonal Antibody [Clone ID: OTI10A6]

Product data:

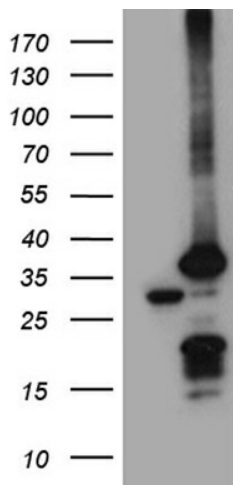
Product Type:	Primary Antibodies
Clone Name:	OTI10A6
Applications:	WB
Recommended Dilution:	WB 1:500~2000
Reactivity:	Human, Mouse, Rat
Host:	Mouse
Isotype:	IgG2a
Clonality:	Monoclonal
Immunogen:	Full length human recombinant protein of human PSMA7 (NP_002783) produced in HEK293T cell.
Formulation:	Lyophilized powder (original buffer 1X PBS, pH 7.3, 8% trehalose)
Reconstitution Method:	For reconstitution, we recommend adding 100uL distilled water to a final antibody concentration of about 1 mg/mL. To use this carrier-free antibody for conjugation experiment, we strongly recommend performing another round of desalting process. (OriGene recommends Zeba Spin Desalting Columns, 7KMWCO from Thermo Scientific)
Purification:	Purified from mouse ascites fluids or tissue culture supernatant by affinity chromatography (protein A/G)
Conjugation:	Unconjugated
Storage:	Store at -20°C as received.
Stability:	Stable for 12 months from date of receipt.
Predicted Protein Size:	27.7 kDa
Gene Name:	proteasome 20S subunit alpha 7
Database Link:	NP_002783 Entrez Gene 26444 Mouse Entrez Gene 29674 Rat Entrez Gene 5688 Human Q14818
Synonyms:	C6; HEL-S-276; HSPC; RC6-1; XAPC7
Protein Families:	Druggable Genome, Protease



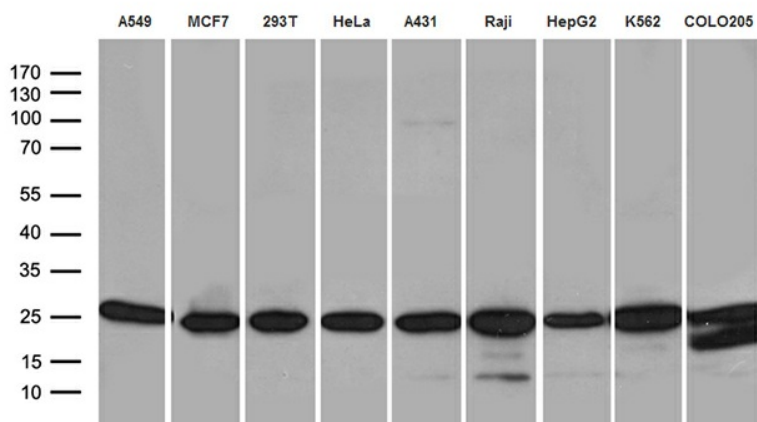
[View online »](#)

Protein Pathways: Proteasome

Product images:



HEK293T cells were transfected with the pCMV6-ENTRY control (Left lane) or pCMV6-ENTRY PSMA7 ([RC201169], Right lane) cDNA for 48 hrs and lysed. Equivalent amounts of cell lysates (5 ug per lane) were separated by SDS-PAGE and immunoblotted with anti-PSMA7 (1:2000). Positive lysates [LY400987] (100ug) and [LC400987] (20ug) can be purchased separately from OriGene.



Western blot analysis of extracts (35ug) from 9 different cell lines by using anti-PSMA7 monoclonal antibody (1:500).