

## Product datasheet for CF810247

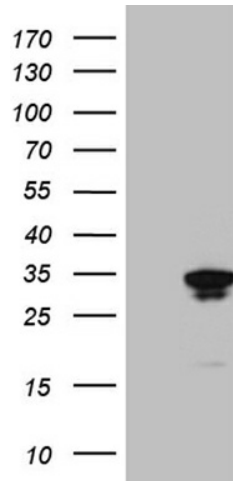
### GTP cyclohydrolase 1 (GCH1) Mouse Monoclonal Antibody [Clone ID: OTI1E3]

#### Product data:

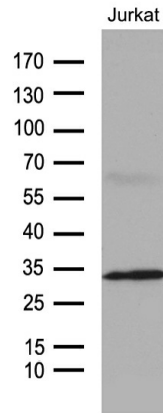
Product Type:	Primary Antibodies
Clone Name:	OTI1E3
Applications:	IHC, WB
Recommended Dilution:	WB 1:500~2000, IHC 1:500
Reactivity:	Human, Mouse, Rat
Host:	Mouse
Isotype:	IgG2a
Clonality:	Monoclonal
Immunogen:	Full length human recombinant protein of human GCH1 (NP_001019195) produced in E.coli.
Formulation:	Lyophilized powder (original buffer 1X PBS, pH 7.3, 8% trehalose)
Reconstitution Method:	For reconstitution, we recommend adding 100uL distilled water to a final antibody concentration of about 1 mg/mL. To use this carrier-free antibody for conjugation experiment, we strongly recommend performing another round of desalting process. (OriGene recommends Zeba Spin Desalting Columns, 7KMWCO from Thermo Scientific)
Purification:	Purified from mouse ascites fluids or tissue culture supernatant by affinity chromatography (protein A/G)
Conjugation:	Unconjugated
Storage:	Store at -20°C as received.
Stability:	Stable for 12 months from date of receipt.
Predicted Protein Size:	27.7 kDa
Gene Name:	GTP cyclohydrolase 1
Database Link:	<a href="#">NP_001019195</a> <a href="#">Entrez Gene 14528 Mouse</a> <a href="#">Entrez Gene 29244 Rat</a> <a href="#">Entrez Gene 2643 Human</a> <a href="#">P30793</a>
Synonyms:	DYT5; DYT5a; DYT14; GCH; GTP-CH-1; GTPCH1; HPABH4B
Protein Families:	Druggable Genome
Protein Pathways:	Folate biosynthesis, Metabolic pathways


[View online »](#)

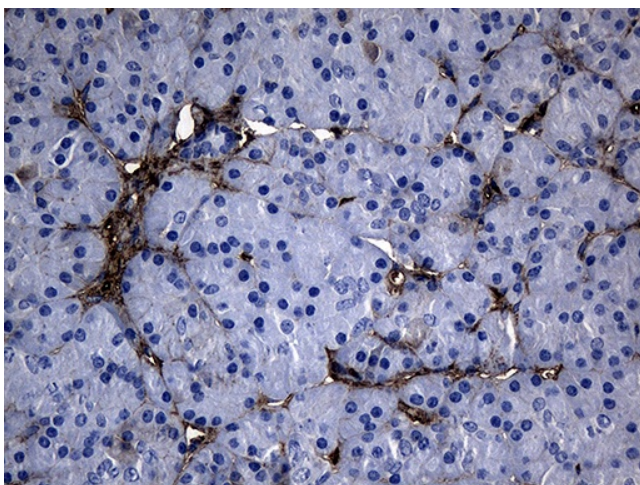
## Product images:



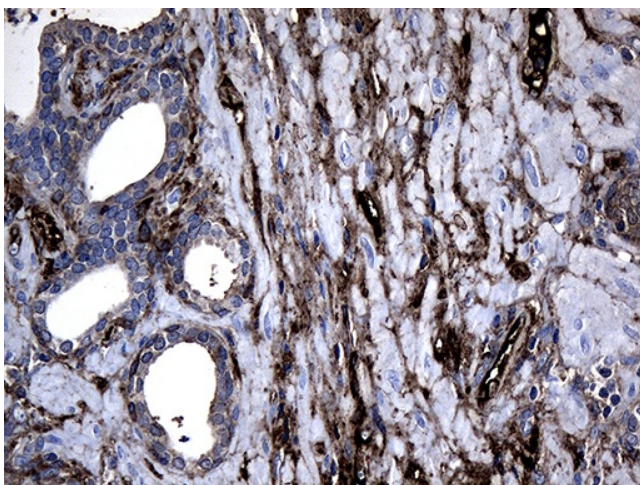
HEK293T cells were transfected with the pCMV6-ENTRY control (Left lane) or pCMV6-ENTRY GCH1 ([RC224968], Right lane) cDNA for 48 hrs and lysed. Equivalent amounts of cell lysates (5 ug per lane) were separated by SDS-PAGE and immunoblotted with anti-GCH1 (1:2000). Positive lysates [LY422611] (100ug) and [LC422611] (20ug) can be purchased separately from OriGene.



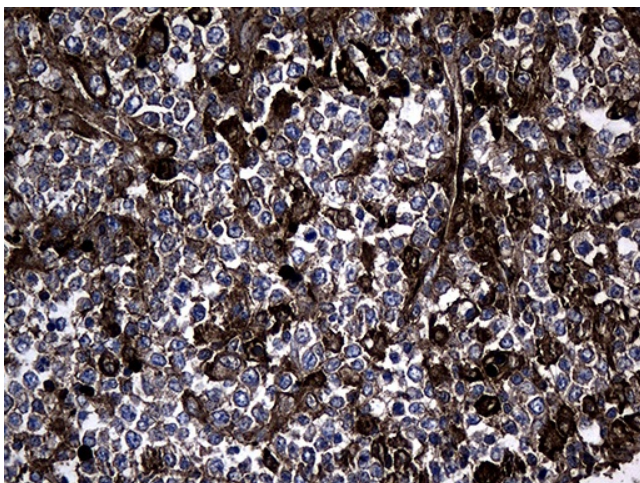
Western blot analysis of extracts (35ug) from Jurkat cell line by using anti-GCH1 monoclonal antibody (1:500).



Immunohistochemical staining of paraffin-embedded Human pancreas tissue within the normal limits using anti-GCH1 mouse monoclonal antibody. (Heat-induced epitope retrieval by 1mM EDTA in 10mM Tris buffer (pH8.5) at 120°C for 3min, [TA810247]) (1:500)



Immunohistochemical staining of paraffin-embedded Carcinoma of Human prostate tissue using anti-GCH1 mouse monoclonal antibody. (Heat-induced epitope retrieval by 1mM EDTA in 10mM Tris buffer (pH8.5) at 120°C for 3min, [TA810247]) (1:500)



Immunohistochemical staining of paraffin-embedded Human lymphoma tissue using anti-GCH1 mouse monoclonal antibody. (Heat-induced epitope retrieval by 1mM EDTA in 10mM Tris buffer (pH8.5) at 120°C for 3min, [TA810247]) (1:500)