

## Product datasheet for **CF810137**

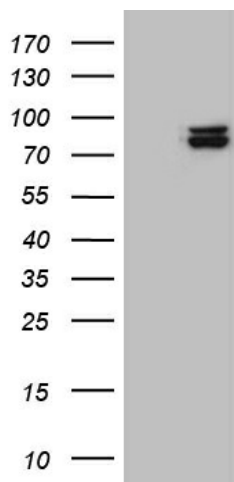
### SEC23B Mouse Monoclonal Antibody [Clone ID: OTI6E8]

#### Product data:

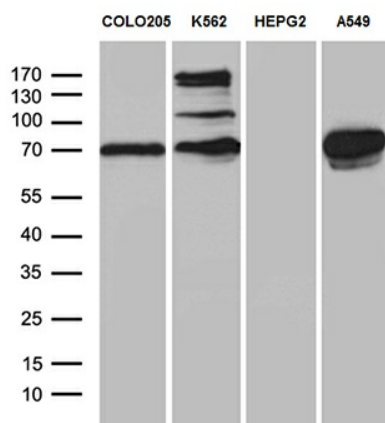
Product Type:	Primary Antibodies
Clone Name:	OTI6E8
Applications:	WB
Recommended Dilution:	WB 1:500
Reactivity:	Human, Mouse, Rat
Host:	Mouse
Isotype:	IgG1
Clonality:	Monoclonal
Immunogen:	Human recombinant protein fragment corresponding to amino acids 392-641 of human SEC23B (NP_116780) produced in E.coli.
Formulation:	Lyophilized powder (original buffer 1X PBS, pH 7.3, 8% trehalose)
Reconstitution Method:	For reconstitution, we recommend adding 100uL distilled water to a final antibody concentration of about 1 mg/mL. To use this carrier-free antibody for conjugation experiment, we strongly recommend performing another round of desalting process. (OriGene recommends Zeba Spin Desalting Columns, 7KMWCO from Thermo Scientific)
Purification:	Purified from mouse ascites fluids or tissue culture supernatant by affinity chromatography (protein A/G)
Conjugation:	Unconjugated
Storage:	Store at -20°C as received.
Stability:	Stable for 12 months from date of receipt.
Predicted Protein Size:	86.3 kDa
Gene Name:	SEC23 homolog B, COPII coat complex component
Database Link:	<a href="#">NP_116780</a> <a href="#">Entrez Gene 27054 Mouse</a> <a href="#">Entrez Gene 362226 Rat</a> <a href="#">Entrez Gene 10483 Human Q15437</a>
Synonyms:	CDA-II; CDAIL; CDAN2; HEMPAS



[View online »](#)

**Product images:**


HEK293T cells were transfected with the pCMV6-ENTRY control (Left lane) or pCMV6-ENTRY SEC23B ([RC210572], Right lane) cDNA for 48 hrs and lysed. Equivalent amounts of cell lysates (5 ug per lane) were separated by SDS-PAGE and immunoblotted with anti-SEC23B (1:500). Positive lysates [LY403219] (100ug) and [LC403219] (20ug) can be purchased separately from OriGene.



Western blot analysis of extracts (35ug) from 4 different cell lines by using anti-SEC23B monoclonal antibody (1:500).